

EXAMINATION		NATIONAL SENIOR CERTIFICATE	
GRADE		12	
DATE		NOVEMBER 2025	
SUBJECT		AGRICULTURAL MANAGEMENT PRACTICES	
PAPER		1	
MARK TOTAL		200	
DURATION (HOURS)		3	
NUMBER OF PAGES		13	



SOUTH AFRICAN COMPREHENSIVE ASSESSMENT INSTITUTE
SUID-AFRIKAANSE KOMPREENSIEWE ASSESSERINGSINSTITUUT



INSTRUCTIONS AND INFORMATION

1. This question paper consists of **TWO** sections, namely **SECTION A** and **SECTION B**.
2. Answer **ALL** the questions in the **ANSWER BOOK**.
3. Start the answer to each question at the top of a new page.
4. Number the answers exactly as the questions are numbered.
5. Non-programmable calculators may be used.
6. Show **ALL** calculations, including formulae, where applicable.
7. Write neatly and legibly, in **BLUE** ink only.



SECTION A

QUESTION 1

1.1 Various options are provided as possible answers to the following questions. Choose the correct answer and write only the letter (A–D) next to the question numbers (1.1.1 to 1.1.10) in the ANSWER BOOK, for example 1.1.11 D.

1.1.1 Efficient mechanisation in farming is the solution to the ...

- A lack of schooling.
- B production of different products.
- C increasing lack of farm labour.
- D cost of training labourers.

1.1.2 Equipment needed to accurately record the application of water when using a sprinkler system.

- A Rain gauge
- B Barometer
- C Evaporation pan
- D Tensiometer

1.1.3 The most important document an entrepreneur needs to source funding for a new business venture is a ...

- A cash flow statement.
- B balance sheet.
- C marketing plan.
- D business plan.

1.1.4 A type of farmer who uses most of the farm produce for household consumption and can ensure food security for households in rural areas:

- A Cash crop farmer
- B Commercial farmer
- C Subsistence farmer
- D Irrigation farmer



- 1.1.5 A person who transforms commodities using value-adding methods.
- A Producer
 - B Processor
 - C Retailer
 - D Seller
- 1.1.6 ... is where the quantity of a product that consumers require is equal to the quantity the producers wish to sell.
- A Market value
 - B Market research
 - C Market equilibrium
 - D Market place
- 1.1.7 To determine the liquidity of a farm, a farmer calculates the difference between the ...
- A assets and liabilities.
 - B income and expenditure.
 - C loan and monthly payments.
 - D profit and loss.
- 1.1.8 The legislation that controls information on ingredients and nutritional values.
- A Standards Act, 1962 (Act 33 of 1962)
 - B Foodstuffs, Cosmetic and Disinfectants Act, 1972 (Act 54 of 1972)
 - C Agricultural Product Standards Act, 1990 (Act 119 of 1990)
 - D Regulations relating to the Labelling and Advertising of Foodstuffs (R146 of 2010)
- 1.1.9 The following does NOT affect an increase in local marketing costs:
- A Marketing service
 - B Processing of food
 - C Export tax
 - D Packaging of food



1.1.10 The process where topsoil and subsoil are collected to determine the nutrient status of the soil.

- A Soil sampling
- B Soil survey
- C Soil data
- D Soil analysis

(10x2) (20)

1.2 Choose a description from COLUMN B that matches a term/phrase in COLUMN A. Write only the letter (A–L) next to the question numbers (1.2.1 to 1.2.10) in the ANSWER BOOK, e.g. 1.2.11 M. Use each description in COLUMN B only ONCE.

COLUMN A	COLUMN B
1.2.1 Leadership	A. To determine projected movement of funds in an enterprise.
1.2.2 Humidity	B. An indicator of the crop's readiness for harvesting.
1.2.3 Advertising	C. The management principle to achieve the aims of the enterprise.
1.2.4 Cash flow budget	D. Type and level of nutrients in the soil.
1.2.5 Depreciation	E. A process used for the production of wine, beer and to make bread rise.
1.2.6 Organising	F. Focusing on one enterprise on the farm.
1.2.7 Niche market	G. Delegation of authority and responsibilities.
1.2.8 Product colour	H. When the value of an item decreases over time.
1.2.9 Sugar fermentation	I. Farm accounts that must be paid at the end of the month.
1.2.10 Chemical soil data	J. Amount of water in the atmosphere at a particular atmospheric pressure.
	K. A specialised market that targets a small number of consumers in a high-income group.
	L. An agricultural marketing function aimed at promoting farm produce.

(10x2) (20)



1.3 Give the CORRECT agricultural term for EACH of the following descriptions. Write only the term next to the question numbers (1.3.1 to 1.3.5) in the ANSWER BOOK, e.g. 1.3.6 Precision farming.

1.3.1 The amount of work done by a farm worker per time unit.

1.3.2 Veld that is usually palatable throughout the year.

1.3.3 The marketing channel that is used when consumers travel to a farm and buy products on the farm.

1.3.4 The prevention of soil pollution, soil erosion, soil degradation or loss of soil nutrients.

1.3.5 Business expenses that must be met within a short period of time.

(5x1) (5)

1.4 The following statements are INCORRECT. Change the UNDERLINED word(s) to make the statement CORRECT. Write the answer next to the question numbers (1.4.1 to 1.4.5) in the ANSWER BOOK, e.g. 1.4.6 Fixed capital.

1.4.1 Plain is a characteristic of natural pastures consisting of mountains, plateaus, and slopes.

1.4.2 Quality determines both the supply and demand for an agricultural product on the market.

1.4.3 Owner's equity is the total amount of money that is generated by a farming enterprise in one season.

1.4.4 Blanching is the process used to preserve fruit by placing it in syrup.

1.4.5 Soil moisture is the ability of water to flow through soil.

(5x1) (5)

TOTAL SECTION A: [50]



SECTION B

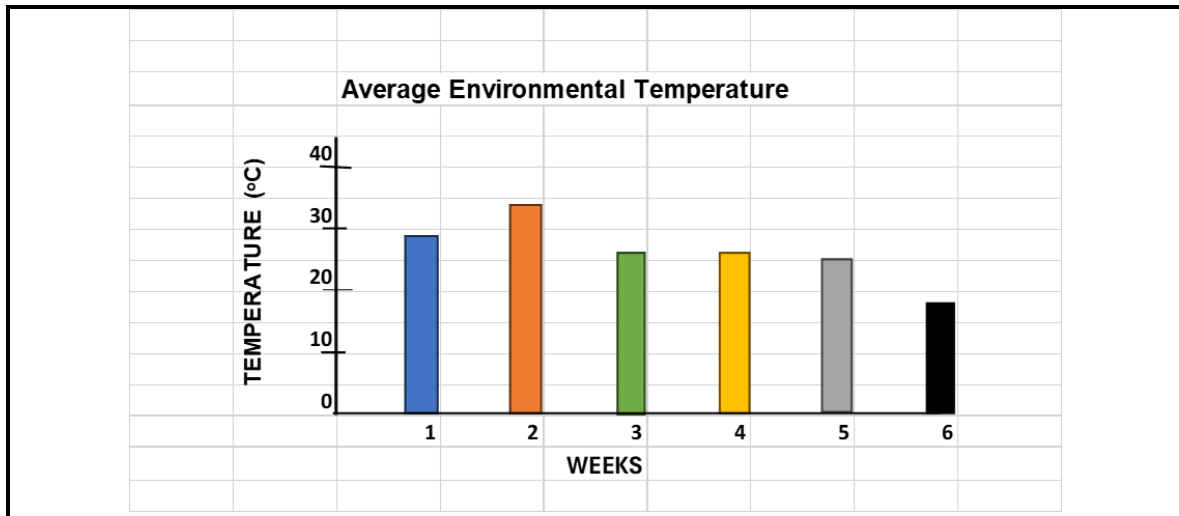
QUESTION 2: PHYSICAL AND FINANCIAL FARM PLANNING

Start the question on a **NEW** page.

- 2.1 Good farm planning with an organised schedule where all natural resources are integrated with a well-balanced farming programme, is essential.
- 2.1.1 Name FOUR functions of soil in the production process. (4)
- 2.1.2 The collection of soil data is important in farm planning. List FOUR types of soil data that must be collected. (4)
- 2.1.3 Explain the effect of deep soil on crop production. (3)
- 2.2 A crop farmer wants to apply precision farming as a farming method. Physical soil aspects are determined and fertiliser is applied in the beginning of the season according to the physical soil characteristics. A centre-pivot irrigation system irrigates the land weekly, irrespective whether it had rained or not.
- 2.2.1 State whether this farmer adheres to the principles of precision farming. Motivate your answer. (3)
- 2.2.2 Suggest FOUR farming practices that will adhere to the principles of precision farming. (4)
- 2.3 The Basic Conditions of Employment Act, 1997 (Act 75 of 1997), determines the minimum wage for farm workers for the term 1 March 2024 to 28 February 2025, which is R27,58 per hour. Farmers must comply with this legislation when budgeting for the following year.
- 2.3.1 The farm manager is compiling a budget for one month. One farm worker works 9 hours per day, thus 45 hours per week and 28 days per month. Calculate the monthly wage for ONE farm worker. Show ALL calculations. (6)
- 2.3.2 Suppose the worker works 4 hours overtime per week. Calculate the overtime wage for ONE week. Show ALL calculations. (3)
- 2.3.3 16 farm workers work on the farm. Calculate the workers' wages for the month without any overtime. Show ALL calculations. (2)
- 2.3.4 By studying the wages of the workers per month, give FOUR reasons why the training of farm workers is essential in the agricultural industry. (4)



- 2.4 A farmer planted a crop with a growing season of 8 weeks late in summer. The temperature during the week must be between 25 °C and 30 °C for this crop to have its highest yield. Study the graph below and answer the questions:



- 2.4.1 Identify the weeks with the correct temperature for the crop. (2)
- 2.4.2 Deduce if the crop will be able to produce a high yield in week 6. (2)
- 2.4.3 The farmer wants to plant this crop in future aiming at the highest possible yield. Suggest THREE possible practices that can be applied to solve the problem with the temperature. (3)
- 2.5 Study the slogan below:



This slogan, aimed at the protection of our natural resources, is used all over the world. Countries have invested large sums of money to do research on agricultural activities that would endorse this slogan.

- 2.5.1 Name TWO farming systems that would be most suitable for a “Go green” world. (2)
- 2.5.2 Briefly explain THREE practices that make “Go green” farming different from conventional farming. (3)
- 2.5.3 Name TWO disadvantages of the “Go green” farming system. (2)
- 2.6 Name THREE reasons for the division of grazing pastures into camps. (3)

[50]



QUESTION 3: ENTREPRENEURSHIP, RECORDING, MARKETING, BUSINESS PLANNING AND ORGANISED AGRICULTURE

Start the question on a **NEW** page.

3.1 The following items have been extracted from a farm's financial statement for the month ending 31 December 2025:

• 2 tractors	R1 230 000
• Seed (330 kg)	R285 000
• Monthly labour expenses	R112 500
• Electric fence	R502 000
• 1 truck	R1 480 000
• 6 implements	R1 330 000
• Cash in bank	R196 500
• Outstanding debtors	R185 000
• Creditors	R850 000

3.1.1 Use a table to classify and arrange the above items under the following headings:

- Operating assets
- Operating expenses
- Non-current assets
- Operating liabilities (9)

3.1.2 Calculate the totals of each item indicated in QUESTION 3.1.1 above. (4)



- 3.2 The table below represents an example of a feed control sheet in an animal production enterprise:

Feed control statement for November 2025

Date	Transaction	Expected quantity feed released (kg)	Actual amount of feed (kg)	Description of usage
1 Nov.	Opening stock		350	
8 Nov.	900 kg delivered		950	
17 Nov.	Expected amount collected	250	700	To feed animals in block A
21 Nov.	Expected amount collected	300	400	To feed animals in block B
30 Nov.	Stocktaking		340	

- 3.2.1 Calculate the quantity of feed that has been lost during the month. (2)
- 3.2.2 Name FOUR possible causes for the loss of feed. (4)
- 3.2.3 Suggest FOUR measures that can be implemented by the farm manager to minimise the loss of feed. (4)



3.3 Study the passage below and answer the questions that follow:

Climate change in South Africa is leading to increased temperatures and rainfall variability. Climate change is a natural cycle of the earth and its atmosphere. Human intervention is causing the climate to change too rapidly and the frequency of natural disasters is likely to increase and impact agriculture and water resources, affecting the farmer. Evidence shows that extreme weather events are becoming more prominent due to climate change. Agriculture is expected to be negatively impacted by droughts, reduced rainfall, pests, and other changes in the environment due to climate change. Higher temperatures in South Africa and less rainfall will result in limited water resources and changing soil moisture, leading to decreased cropland productivity.

[Source: Wikipedia on climate change]

3.3.1 Name THREE natural disasters that could directly be related to climate change. (3)

3.3.2 Explain the possible reasons for an increase in insurance costs caused by disasters as a result of climate change. (4)

3.3.3 Recommend TWO strategies, apart from insurance, that the farmer can implement to reduce the effect of disasters caused by climate change. (2)

3.4 Farming is one of many forms of entrepreneurship.

3.4.1 Discuss the economic importance of farmers as entrepreneurs to the country. (5)

3.4.2 Give THREE reasons why it is necessary for an entrepreneur to develop a business plan. (3)

3.4.3 Name FOUR components of the SWOT analysis method. (4)

3.5 There are several product organisations, such as Grain SA and Cape Mohair, which assist farmers with the production and marketing of their products.

3.5.1 Name and discuss the THREE roles of product organisations in the agricultural sector. (6)

[50]



QUESTION 4: HARVESTING, PROCESSING, MANAGEMENT AND AGRITOURISM

Start the question on a new page.

4.1 The packaging of agricultural products plays an important role during marketing.



[Source: <https://agriculturistmusa.com/packaging-of-products-in-marketing/>]

4.1.1 State FOUR reasons why the above packaging is suitable for the packaging of vegetables. (4)

4.1.2 List TWO disadvantages of the packaging above. (2)

4.1.3 Define the purpose of the packaging above. (3)

4.2 The delegation of farm tasks is an important component of motivation. This involves the aspect of human relations, as well as the tasks associated with personnel management.

4.2.1 Explain the meaning of '*delegating tasks*' on the farm. (3)

4.2.2 Describe THREE effects that the delegation of tasks will have on farm workers. (3)

4.2.3 Name FOUR ways in which motivation can take place on a farm. (4)

4.3 Food is processed by a method of preservation.

4.3.1 List THREE methods of eliminating microorganisms from food. (3)

4.3.2 Discuss the term '*pasteurisation*'. (4)

4.3.3 Explain what is meant by '*commercial sterility*'. (3)



4.4 Study the photograph below:



[Source: <https://www.tn.gov/agriculture/farms/agritourism.html>]

- 4.4.1 Define the term 'agritourism'. (3)
- 4.4.2 State THREE items of capital investment that are essential when establishing an agritourism farm. (3)
- 4.4.3 List FOUR marketing skills that are important in agritourism. (4)
- 4.4.4 Name THREE disadvantages of agritourism. (3)
- 4.5 Diversification refers to the expansion of the number of activities or businesses managed by one company.
- 4.5.1 Briefly explain the meaning of an asset class. Give ONE example. (3)
- 4.5.2 Specialisation is the opposite of diversification. Give a brief explanation with ONE example. (3)
- 4.6 Name TWO basic management functions of a business. (2)

[50]

TOTAL SECTION B: [150]

GRAND TOTAL: [200]