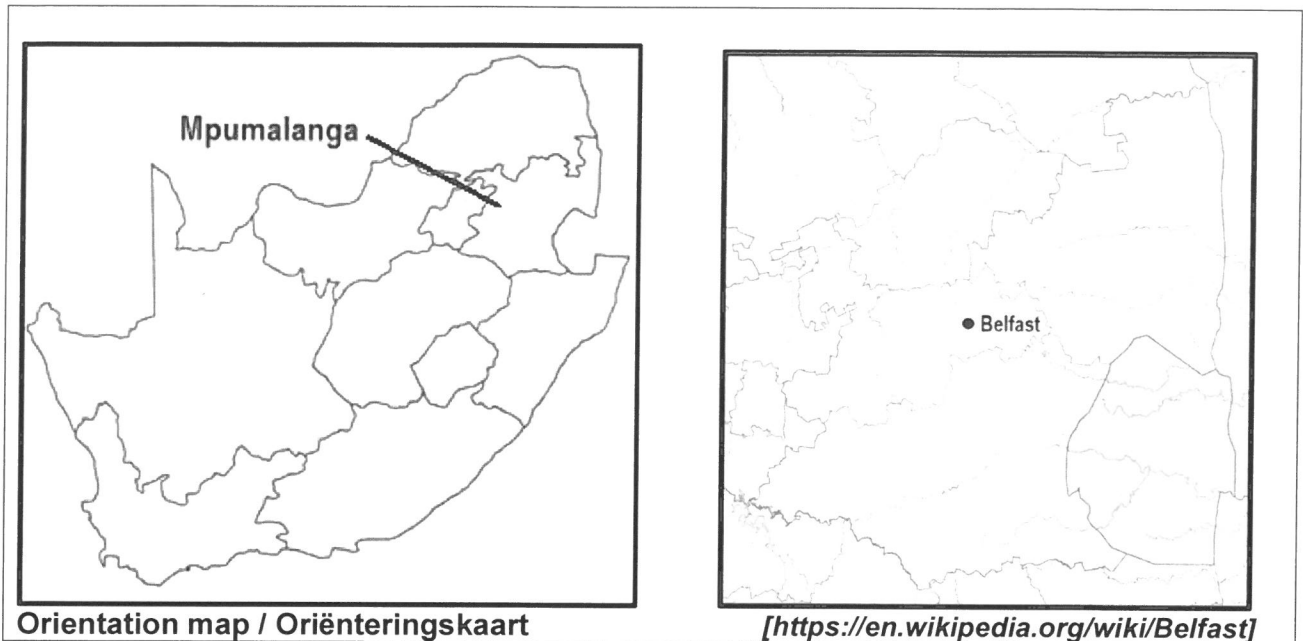


GEOGRAPHY / GEOGRAFIE
NATIONAL SENIOR CERTIFICATE / NASIONALE SENIORSERTIFIKAAT
PAPER 1 / VRAESTEL 1: JUNE / JUNIE 2024

GENERAL INFORMATION; 1:50 000 TOPOGRAPHIC MAP; 1:10 000 ORTHOPHOTO MAP /
ALGEMENE INLIGTING; 1:50 000 TOPOGRAFIESE KAART; 1:10 000 ORTOFOTOKAART



Belfast is a small town in Mpumalanga Province. It is situated in the eMakhazeni Local Municipality in the Nkangala District Municipality. The town is renowned for its excellent trout fishing, sheep and dairy farming as well as maize, potatoes and timber production. Coal and a black granite are mined around Belfast.

Belfast is 2 025 metres above sea level and is one of the highest and coldest towns in South Africa.

o o O o o

Belfast is 'n klein dorpie in die Mpumalangaprovincie. Dit is geleë in die eMakhazeni Munisipaliteit in die Nkangala Distrik Munisipaliteit. Die dorp is bekend vir sy uitsonderlike forelhengel, skaap- en suiwelboerdery asook mielie-, artappel- en houtproduksie. Steenkool en 'n swart graniet word rondom die dorp ontgin.

Belfast is 2 025 meter bo seevlak geleë en is een van die hoogste en koudste dorpe in Suid-Afrika.

[Source/Bron: <https://en.wikipedia.org/wiki/Belfast>]

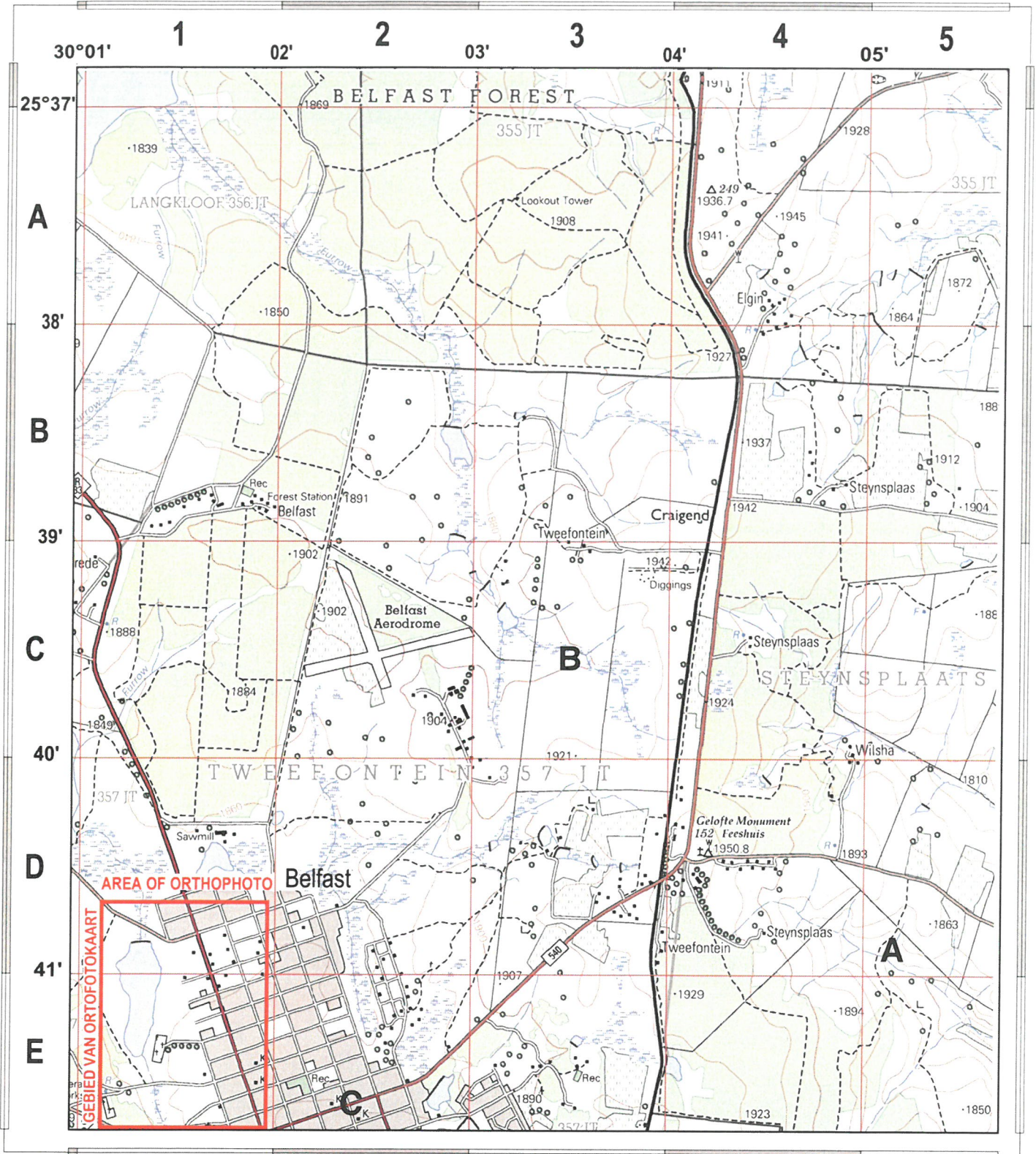
Some of the English terms and their Afrikaans translations / Sommige van die Engelse terme en hul Afrikaanse vertalings

ENGLISH	AFRIKAANS
Belfast Aerodrome	Belfastlughawe
Diggings	Delwery
Forest Station	Bosboustasie
Lookout Tower	Uitkyktoring
Recreation (Rec.)	Ontspanning (Rec)
Steyn's Farm	Steynsplaas

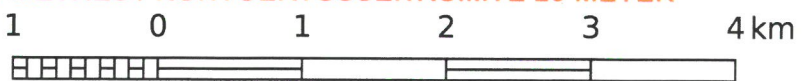
..... Topographic map / Topografiese kaart

2530CA BELFAST

1:50 000 SOUTH AFRICA
SUID-AFRIKA



CONTOUR INTERVAL 20 METRES / KONTOERTUSSENRUIMTE 20 METER

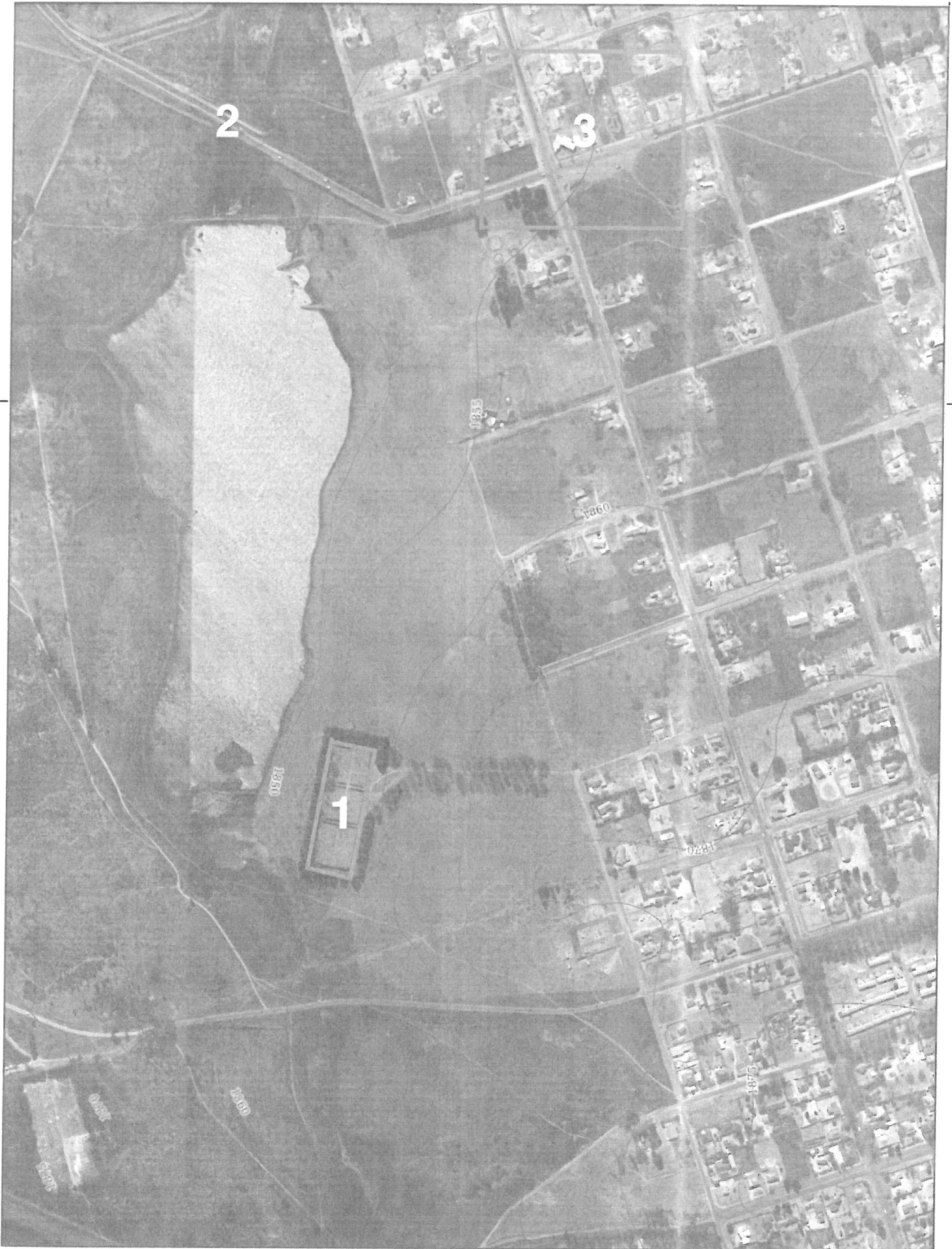


Mean magnetic declination (2019) is 19°37' West of True North and mean annual change 8' Westward.

Gemiddelde magnetiese deklinasie (2019) is 19°37' Wes van Ware Noord. Gemiddelde verandering 8' Weswaarts.

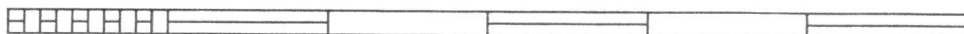


Topographic map courtesy CD:NGI
Topographic map layer hosted by OSM
This layout CC BY-SA 2.5 ZA
by SAGTA and Kartoza



CONTOUR INTERVAL 5 METRES / KONTOERTUSSENRUIMTE 5METER

0.2 0 0.2 0.4 0.6 0.8 1 km



Orthophotos and topographic data
courtesy CD:NGI
Orthophoto map layer hosted by OSM
This layout CC BY-SA 2.5 ZA
by SAGTA and Kartoza

REFERENCE

VERKLARING

National Freeway; National Route.....		Nasionale Deurpad; Nasionale Roete
Arterial Route.....		Hoofverkeersroete
Main Road.....		Hoofpad
Secondary Road; Bench Mark.....		Sekondêre Pad; Hoogtemerk
Other Road; Bridge.....		Ander Pad; Brug
Track and Hiking Trail.....		Dowwe Pad en Voetslaanpad
Railway; Station or Siding.....		Spoorweg; Stasie of Sylyn
Other Railway; Tunnel.....		Ander Spoorweg; Tonnel
Embankment; Cutting.....		Opvulling; Deurgrawing
Power Line.....		Kraglyn
Built-up Area (High, Low Density).....		Beboude Gebied (Hoë, Lae Digtheid)
Buildings; Ruin.....		Geboue; Murasie
Post Office; Police Station; Store.....		Poskantoor; Polisiestasie; Winkel
Place of Worship; School; Hotel.....		Plek van Aanbidding; Skool; Hotel
Fence; Wall.....		Draadheining; Muur
Windpump; Monument.....		Windpomp; Monument
Communication Tower.....		Kommunikasietoring
Wind Turbine; Wind Farm.....		Windturbine; Windplaas
Satellite Antenna; Solar Panel Array.....		Satelliet Antenna; Sonkrag Plaas
Trigonometrical Station; Marine Beacon.....		Peilbaken; Seevaartbaken
Lighthouse and Marine Light.....		Vuurtoring en Seevaartlig
Cemetery; Grave.....		Begraafplaas; Graf
International Boundary and Beacon.....		Internasionale Grens en Baken
Provincial Boundary.....		Provinsiale Grens
Protected Area.....		Bewarings Gebied
Perennial River.....		Standhoudende Rivier
Perennial Water.....		Standhoudende Water
Non-perennial River.....		Nie-standhoudende Rivier
Non-Perennial Water.....		Nie-standhoudende Water
Dry Water Course.....		Droë Loop
Dry Pan.....		Droë Pan
Marsh and Vlei.....		Moeras en Vlei
Pipeline (above ground).....		Pyplyn (bo die grond)
Water Tower; Reservoir; Water Point.....		Watertoring; Reservoir; Waterpunt
Coastal Rocks.....		Kuslynrotse
Prominent Rock Outcrop.....		Prominente Klipbank
Erosion; Sand.....		Erosie; Sand
Woodland.....		Beboste Gebied
Cultivated Land.....		Bewerkte Land
Orchard or Vineyard.....		Boord of Wingerd
Recreation Ground.....		Ontspanningsterrein
Row of Trees.....		Rye Bome
Mine Dump; Excavation.....		Mynhoop; Uitgraving