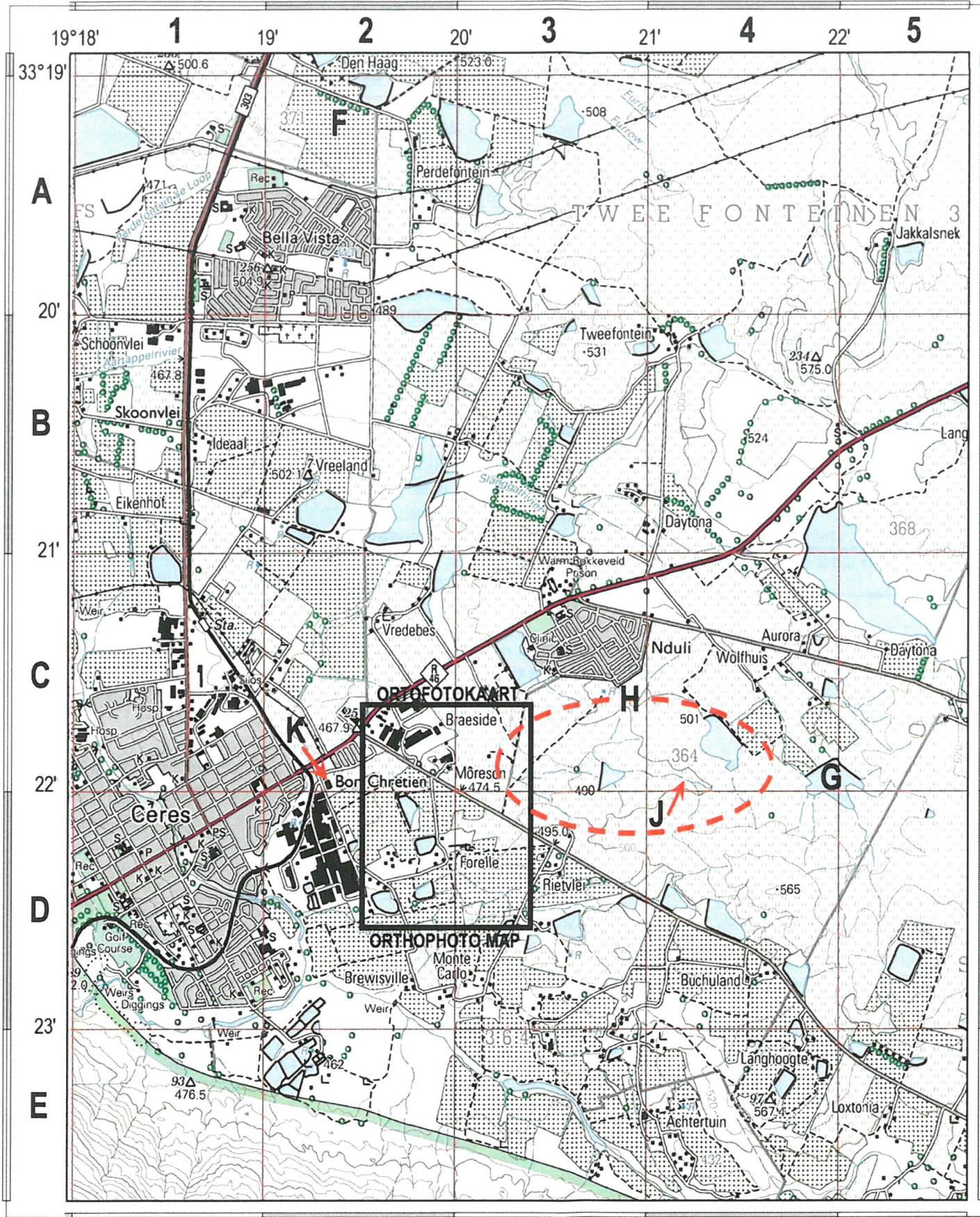
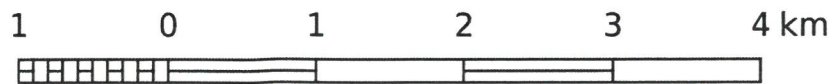


3319AD CERES

1:50 000 SOUTH AFRICA
SUID-AFRIKA



CONTOUR INTERVAL 20 METRES / KONTOERTUSSENRUIMTE 20 METER



Mean magnetic declination 25° 38' West of True North (2024). Mean annual change 5' Westward (2021-2023)

Gemiddelde magnetiese deklinasie 25° 38' Wes van Ware Noord (2024). Gemiddelde jaarlikse verandering 5' Weswaarts (2021-2023)



Topographic map courtesy CD:NGI
Topographic map layer hosted by OSM
This layout CC BY-SA 2.5 ZA
by SAGTA and Kartoza

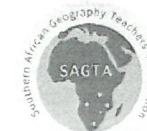
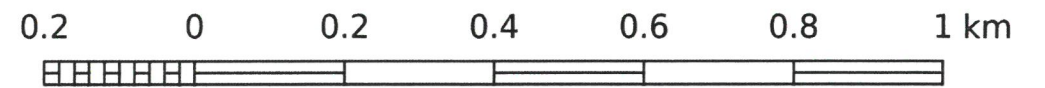
1:10 000 SOUTH AFRICA
SUID-AFRIKA

3319 AD 12 CERES
19°20'

ORTOFOTOKAARTREEKS
ORTHOPHOTO MAP SERIES



CONTOUR INTERVAL 5 METRES / KONTOERTUSSENRUIMTE 5 METER



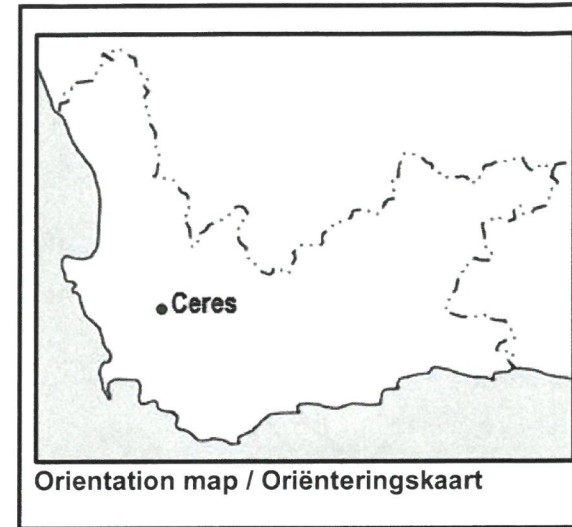
Orthophotos and topographic data courtesy CD:NGI
Orthophoto map layer hosted by OSM
This layout CC BY-SA 2.5 ZA
by SAGTA and Kartoza

MAP SYMBOLS / KAARTSIMBOLE

National Freeway; National Route.....		Nasionale Deurpad; Nasionale Roete
Arterial Route.....		Hoofverkeersroete
Main Road.....		Hoofpad
Secondary Road; Bench Mark.....		Sekondêre Pad; Hoogtemerk
Other Road; Bridge.....		Ander Pad; Brug
Track and Hiking Trail.....		Dowwe Pad en Voetslaanpad
Railway; Station or Siding.....		Spoorweg; Stasie of Sylyn
Other Railway; Tunnel.....		Ander Spoorweg; Tonnel
Embankment; Cutting.....		Opvulling; Deurgrawing
Power Line.....		Kraglyyn
Built-up Area (High, Low Density).....		Beboude Gebied (Hoë, Lae Digtheid)
Buildings; Ruin.....		Geboue; Murasie
Post Office; Police Station; Store.....		Poskantoor; Polisiestasie; Winkel
Place of Worship; School; Hotel.....		Plek van Aanbidding; Skool; Hotel
Fence; Wall.....		Draadheining; Muur
Windpump; Monument.....		Windpomp; Monument
Communication Tower.....		Kommunikasietoring
Wind Turbine; Wind Farm.....		Windturbine; Windplaas
Satellite Antenna; Solar Panel Array.....		Satelliet Antenna; Sonkrag Plaas
Trigonometrical Station; Marine Beacon.....		Peilbaken; Seevaartbaken
Lighthouse and Marine Light.....		Vuurtoring en Seevaartig
Cemetery; Grave.....		Begraafplaas; Graf
International Boundary and Beacon.....		Internasionale Grens en Baken
Provincial Boundary.....		Provinsiale Grens
Protected Area.....		Bewarings Gebied
Perennial River.....		Standhoudende Rivier
Perennial Water.....		Standhoudende Water
Non-perennial River.....		Nie-standhoudende Rivier
Non-Perennial Water.....		Nie-standhoudende Water
Dry Water Course.....		Droë Loop
Dry Pan.....		Droë Pan
Marsh and Vlei.....		Moeras en Vlei
Pipeline (above ground).....		Pyplyn (bo die grond)
Water Tower; Reservoir; Water Point.....		Watertoring; Reservoir; Waterpunt
Coastal Rocks.....		Kuslynrotse
Prominent Rock Outcrop.....		Prominente Klipbank
Erosion; Sand.....		Erosie; Sand
Woodland.....		Beboste Gebied
Cultivated Land.....		Bewerkte Land
Orchard or Vineyard.....		Boord of Wingerd
Recreation Ground.....		Ontspanningsterrein
Row of Trees.....		Rye Bome
Mine Dump; Excavation.....		Mynhoop; Uitgraving

GEOGRAPHY / GEOGRAFIE SENIOR CERTIFICATE EXAMINATION / SENIOR-SERTIFIKAATEKSAMEN PAPER 1 / VRAESTEL 1 NOVEMBER 2025

GENERAL INFORMATION; 1:50 000 TOPOGRAPHIC MAP; 1:10 000 ORTHOPHOTO MAP /
ALGEMENE INLIGTING; 1:50 000 TOPOGRAFIESE KAART; 1:10 000 ORTOFOTOKAART



Ceres is the administrative centre and largest town of the Witzenberg Local Municipality in the Western Cape Province and serves as a regional centre for the surrounding towns. The main road through Ceres (today the R46) was the old route northward between Cape Town and Johannesburg, which was later replaced by the N1 highway, through the Breede River Valley to the south.

The area experiences a typical Mediterranean climate. Temperatures in summer are warmer due to its inland location. However, winters are cool to quite cold and wet, with frequent snowfalls on the surrounding mountains. The total annual precipitation averages 599mm, with an average temperature of 23.1°C in January (the hottest month) and 9,8°C in July, the coldest month.

Ceres is lying in South Africa's fold mountain region and the syncline valley in which the town is situated is extremely fertile and is a major producer of the country's finest deciduous fruit. The area is well-known for fresh and dried fruit and for fruit juices exported worldwide, as well as natural spring water. In summer, people come to pick cherries at the 'Klondyke' farm.

o o o o o o o

Ceres is die administratiewe sentrum en grootste dorp van die Witzenberg Plaaslike Munisipaliteit in die Wes-Kaap Provinsie en dien as 'n streeksentrum vir die omliggende dorpe. Die hoofpad deur Ceres (vandag die R46) was die ou roete noordwaarts tussen Kaapstad en Johannesburg, wat later deur die N1-hoofweg, deur die Breederiviervallei na die suide, vervang is.

Die gebied ervaar 'n tipiese Mediterreense klimaat. Temperature in die somer is warmer as gevolg van sy binnelandse ligging. Winters is egter koel tot redelik koud en nat, met gereelde sneeuval op die omliggende berge. Die totale jaarlikse neerslag is gemiddeld 599mm, met 'n gemiddelde temperatuur van 23,1°C in Januarie (die warmste maand) en 9,8°C in Julie, die koudste maand.

Ceres lê in Suid-Afrika se plooibergstreek en die sinklinale vallei waarin die dorp geleë is, is uiters vrugbaar en is 'n hoofprodusent van die land se beste sagtevrugte. Die gebied is bekend vir vars en gedroogde vrugte en vir vrugtesappe wat wêreldwyd uitgevoer word, asook natuurlike fonteinwater. In die somer kom pluk mense kersies by die 'Klondyke'-plaas.

<https://en.wikipedia.org/wiki/Ceres>; <https://weatherspark.com>

Some of the English terms and their Afrikaans translations / Sommige van die Engelse terme en hul Afrikaanse vertaling:

ENGLISH	AFRIKAANS	ENGLISH	AFRIKAANS
Diggings	Delwerye	Golf Course	Gholfbaan
Caravan Park	Karavaanpark	Recreation (Rec.)	Ontspanning (Rec)
Clinic	Kliniek	Weir	Stuwal
Furrow / Canal	Voor / Kanaal		

..... Topographic map / Topografiese kaart