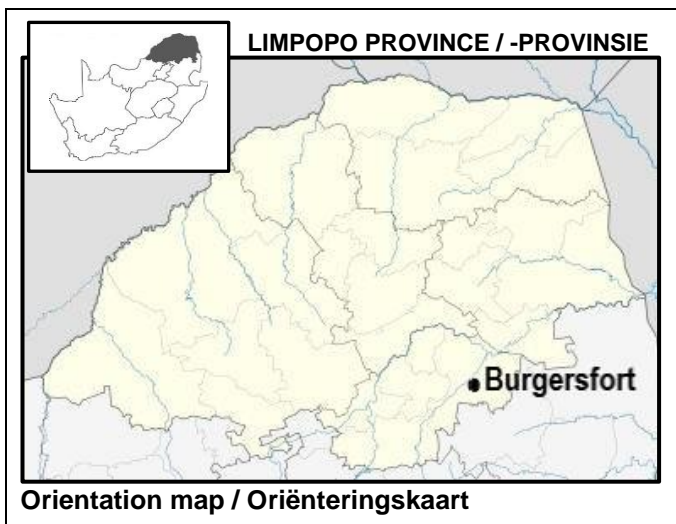


GEOGRAPHY / GEOGRAFIE
NATIONAL SENIOR CERTIFICATE / NASIONALE SENIORSERTIFIKAAT
PAPER 2 / VRAESTEL 2: JUNE / JUNIE 2024

GENERAL INFORMATION; 1:50 000 TOPOGRAPHIC MAP; 1:10 000 ORTHOPHOTO MAP /
ALGEMENE INLIGTING; 1:50 000 TOPOGRAFIESE KAART; 1:10 000 ORTOFOTOKAART



Burgersfort is located in the Limpopo Province, in the Spekboom River Valley at the edge of the Bushveld Complex in the Fetakgomo Tubatse Local Municipality, near the border of Mpumalanga. The neighbouring towns are Steelpoort (16km), Ohrigstad (26km) and Mashishing / Lydenburg (60km). The town serves as a meeting point for two major roads, the R37 and the R555.

The town itself only has a small population of about 10 000 people but the greater municipal area has a population of over 500 000. Children under the age of 15 make up 32.7% of the population, the working age group (15 – 64) 61.6% and the aged group 5.7%. 12 % of the adult population still has no schooling.

The municipality covers a total area of 28km² of which a large part is hilly. The area has erratic rainfall making it essential to irrigate crops. The crops produced are maize, sorghum, fruit and vegetables. Animal farming includes cattle, goats and chickens. Commercial farming covers 7.7 % of the land area, subsistence farming 18.1% and conservation activities (game / nature) only 3.1%, with a potential of extending this to 23.5 %. The region is also rich in platinum and platinum group metals.

o o O o o

Burgersfort is geleë in die Limpopoprovinsie, in die Spekboomriviervallei aan die rand van die Bosveldkompleks in die Fetakgomo Tubatse Plaaslike Munisipaliteit, naby die grens van Mpumalanga. Die buurdorpe is Steelpoort (16km), Ohrigstad (26km) en Mashishing / Lydenburg (60km). Die dorp dien as 'n ontmoetingspunt vir twee hoofpaaie, die R37 en die R555.

Die dorp self het slegs 'n klein bevolking van ongeveer 10 000 mense, maar die groter munisipale gebied het 'n bevolking van meer as 500 000. Kinders onder die ouderdom van 15 maak 32,7% van die bevolking uit, die werkende ouderdomsgroep (15 – 64) 61,6% en die bejaarde groep 5,7%. 12 % van die volwasse bevolking het steeds geen skoolopleiding nie.

Die munisipaliteit beslaan 'n totale gebied van 28km² waarvan 'n groot deel bergagtig is. Die gebied het wisselvallige reënval wat dit noodsaaklik maak om gewasse te besproei. Die gewasse wat geproduseer word, is mielies, sorghum, vrugte en groente. Veeboerdery sluit beeste, bokke en hoenders in. Kommersiële boerdery beslaan 7,7 % van die grondgebied, bestaansboerdery 18,1 % en bewaringsaktiwiteit (wild- / natuur-) slegs 3,1 %, met 'n potensiaal om dit tot 23,5 % uit te brei. Die streek is ook ryk aan platinum- en platinumgroepmetale.

[<https://en.wikipedia.org/>] [Statssa.org.za]

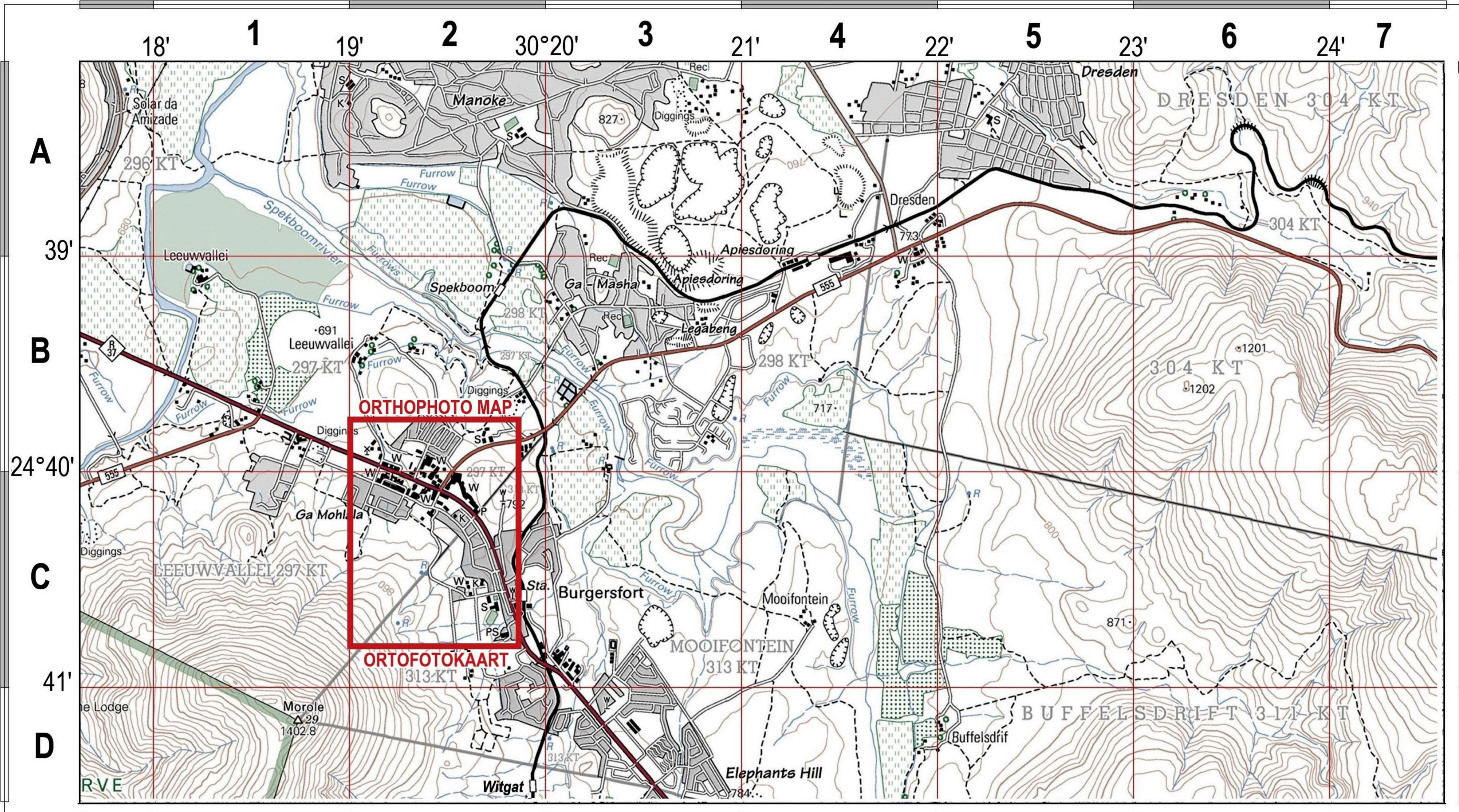
Some of the English terms and their Afrikaans translations / Sommige van die Engelse terme en hul Afrikaanse vertalings

ENGLISH	AFRIKAANS
Diggings	Delwerye
Furrow	Voor
Railway Station (Sta.) [Also see map symbols]	Spoorwegstasie (Sta.) [Kyk ook kaartsimbole]
Recreation (Rec.)	Ontspanning (Rec.)
Spekboom River	Spekboomrivier

.....Topographic map / Topografiese kaart

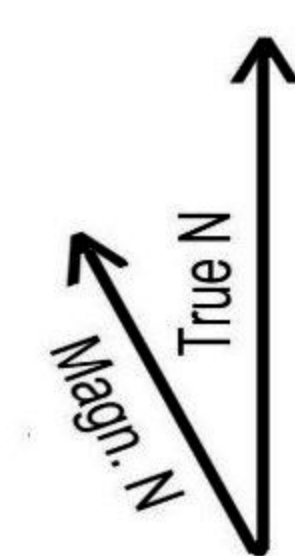
2430CB BURGERSFORT

1:50 000 SOUTH AFRICA
SUID-AFRIKA



ORTHOPHOTO MAP

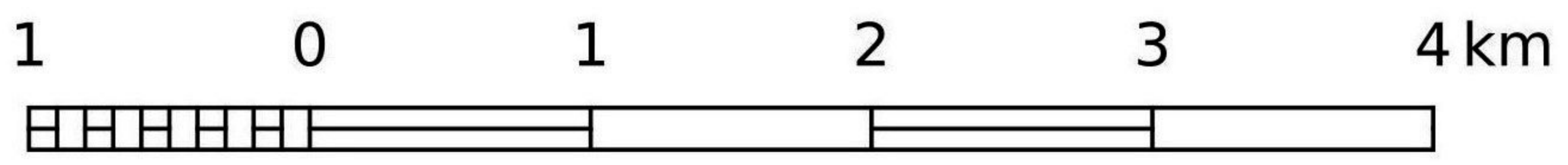
ORTOFOTOKAART



Mean magnetic declination (2020) is 18° 13' West of True North and mean annual change 8' Westward
 Gemiddelde magnetiese deklinasie (2020) is 18° 13' Wes van Ware Noord. Gemiddelde verandering 8' Weswaarts.



CONTOUR INTERVAL 20 METRES / KONTOERTUSSENRUIMTE 20 METER



Topographic map courtesy CD:NGI
 Topographic map layer hosted by OSM
 This layout CC BY-SA 2.5 ZA
 by SAGTA and Kartoza

2430 CB 17 BURGERSFORT

1:10 000 SOUTH AFRICA
SUID-AFRIKA

30°19'

24°40'



30°19'

CONTOUR INTERVAL 5 METRES / KONTOERTUSSENRUIMTE 5 METER

0.2 0 0.2 0.4 0.6 0.8 1 km



Orthophotos and topographic data
courtesy CD:NGI
Orthophoto map layer hosted by OSM
This layout CC BY-SA 2.5 ZA
by SAGTA and Kartoza

REFERENCE

VERKLARING

National Freeway; National Route.....		Nasionale Deurpad; Nasionale Roete
Arterial Route.....		Hoofverkeersroete
Main Road.....		Hoofpad
Secondary Road; Bench Mark.....		Sekondêre Pad; Hoogtemerk
Other Road; Bridge.....		Ander Pad; Brug
Track and Hiking Trail.....		Dowwe Pad en Voetslaanpad
Railway; Station or Siding.....		Spoorweg; Stasie of Sylyn
Other Railway; Tunnel.....		Ander Spoorweg; Tonnel
Embankment; Cutting.....		Opvulling; Deurgrawing
Power Line.....		Kraglyyn
Built-up Area (High, Low Density).....		Beboude Gebied (Hoë, Lae Digtheid)
Buildings; Ruin.....		Geboue; Murasie
Post Office; Police Station; Store.....		Poskantoor; Polisiestasie; Winkel
Place of Worship; School; Hotel.....		Plek van Aanbidding; Skool; Hotel
Fence; Wall.....		Draadheining; Muur
Windpump; Monument.....		Windpomp; Monument
Communication Tower.....		Kommunikasietoring
Wind Turbine; Wind Farm.....		Windturbine; Windplaas
Satellite Antenna; Solar Panel Array.....		Satelliet Antenna; Sonkrag Plaas
Trigonometrical Station; Marine Beacon.....		Peilbaken; Seevaartbaken
Lighthouse and Marine Light.....		Vuurtoring en Seevaartlig
Cemetery; Grave.....		Begraafplaas; Graf
International Boundary and Beacon.....		Internasionale Grens en Baken
Provincial Boundary.....		Provinsiale Grens
Protected Area.....		Bewarings Gebied
Perennial River.....		Standhoudende Rivier
Perennial Water.....		Standhoudende Water
Non-perennial River.....		Nie-standhoudende Rivier
Non-Perennial Water.....		Nie-standhoudende Water
Dry Water Course.....		Droë Loop
Dry Pan.....		Droë Pan
Marsh and Vlei.....		Moeras en Vlei
Pipeline (above ground).....		Pyplyn (bo die grond)
Water Tower; Reservoir; Water Point.....		Watertoring; Reservoir; Waterpunt
Coastal Rocks.....		Kuslynrotse
Prominent Rock Outcrop.....		Prominente Klipbank
Erosion; Sand.....		Erosie; Sand
Woodland.....		Beboste Gebied
Cultivated Land.....		Bewerkte Land
Orchard or Vineyard.....		Boord of Wingerd
Recreation Ground.....		Ontspanningsterrein
Row of Trees.....		Rye Bome
Mine Dump; Excavation.....		Mynhoop; Uitgraving