

<b>EXAMINATION</b>		<b>NATIONAL SENIOR CERTIFICATE</b>	
<b>GRADE</b>		12	
<b>DATE</b>		JUNE 2024	
<b>SUBJECT</b>		GEOGRAPHY	
<b>PAPER</b>		2	
<b>MARK TOTAL</b>		150	
<b>DURATION (HOURS)</b>		3	
<b>NUMBER OF PAGES</b>		18	



**SOUTH AFRICAN COMPREHENSIVE ASSESSMENT INSTITUTE**  
**SUID-AFRIKAANSE KOMPREENSIEWE ASSESSERINGSINSTITUUT**



## INSTRUCTIONS AND INFORMATION

1. This question paper consists of **THREE** questions.

### **SECTION A**

QUESTION 1: RURAL AND URBAN SETTLEMENTS (60 MARKS)

QUESTION 2: ECONOMIC GEOGRAPHY OF SOUTH AFRICA (60 MARKS)

### **SECTION B**

QUESTION 3: MAP SKILLS AND CALCULATIONS (30 MARKS)

2. Answer **ALL THREE** questions.
3. Leave a line between subsections of questions answered.
4. Start **EACH** question at the top of a **NEW** page.
5. Number the answers correctly according to the numbering system used in this question paper.
6. Answer questions in **FULL SENTENCES**, except where you have to state, name, identify or list. Write in full sentences when answering paragraph questions.
7. Units of measurement **MUST** be indicated in your final answer.
8. Draw fully labelled diagrams when instructed to do so.
9. You may use a non-programmable calculator and a magnifying glass.
10. Write neatly and legibly.

### **SECTION B: ADDITIONAL INSTRUCTIONS AND INFORMATION**

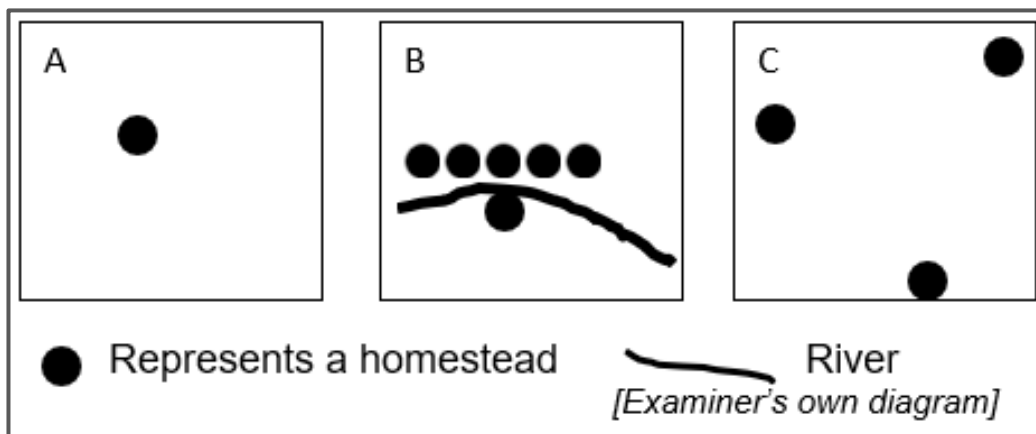
11. Extracts of a 1:50 000 topographic map 2430CB BURGERSFORT and a 1:10 000 orthophoto map 2430 CB 17 BURGERSFORT of a part of the mapped area, are provided.
12. Marks are allocated for the calculations/steps and **NOT** full marks for the correct answer only. The correct substitution should be indicated for the stated formula.
13. Return the topographic map and orthophoto map to the invigilator at the end of the examination session.

## SECTION A

### QUESTION 1: RURAL AND URBAN SETTLEMENTS

Four options are provided as possible answers to the following statements. Choose the correct answer and write only the number and correct letter (A – D) in your answer book. Eg 1.1.9 A

1.1 Use the diagrams below to answer questions 1.1.1, 1.1.2 and 1.1.3.



1.1.1 Diagram **A** represents a/an ...

- A dispersed settlement.
- B isolated farmstead.
- C nucleated settlement.
- D linear village. (1x1) (1)

1.1.2 Diagram **C** represents a/an ...

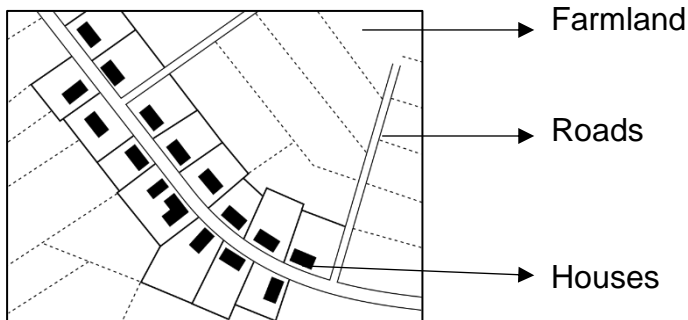
- A dispersed settlement.
- B isolated farmstead.
- C nucleated settlement.
- D linear village. (1x1) (1)

1.1.3 Diagram **B** represents a village in which everyone can access a river and it is called a ... settlement.

- A junction
- B dry-point
- C wet-point
- D bridging point (1x1) (1)



1.1.4 The shape of this village was caused by ...

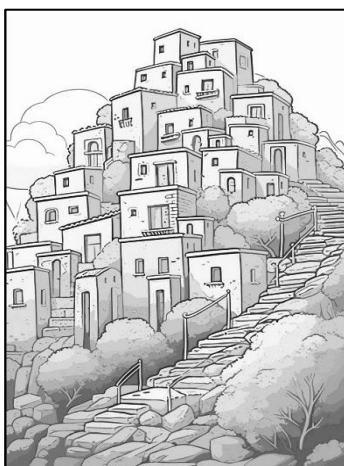


[<https://en.wikipedia.org/>]

- A a road.
- B the relief.
- C a river.
- D the soils.

(1x1) (1)

1.1.5 This village is located on top of a hill because of ....



[<https://za.pinterest.com/>]

- i relief.
- ii security.
- iii water access.
- iv cooler temperatures.

- A i and ii
- B i and iii
- C ii and iv
- D i and iv

(1x1) (1)

1.1.6 Rural settlements are unfunctional and based on ... activities.

- A secondary
- B tertiary
- C quaternary
- D primary

(1x1) (1)



1.1.7 A dairy farmer selecting a site for his farm should consider ...

- i water.
- ii roads.
- iii soil.
- iv pasturage.

- A i and ii
- B i and iii
- C i and iv
- D iii and iv

(1x1) (1)

1.1.8 A commercial farmer producing perishable goods must have access to a very good ... system.

- A packaging
- B transport
- C labour
- D finance

(1x1) (1)

**[8]**



- 1.2 Choose a concept/term from the list below that is related to the description. Write only the concept/term next to the question numbers 1.2.1 – 1.2.7. **[Use a concept/term only once]**

*Gentrification / Facadism / Eco-estates /  
Ghetto / Gated communities / Invasion and succession / Hijacked  
buildings / Golf estate*

- 1.2.1 Suburban residential areas with controlled access via a security-controlled gate.
- 1.2.2 Inner city buildings that have been taken over by people that do not own the buildings.
- 1.2.3 Modernisation and improvement of old houses near the city centre.
- 1.2.4 Large security controlled residential areas built around a golf course.
- 1.2.5 Large security controlled residential complexes built in accordance with 'green' principles that are environmentally friendly.
- 1.2.6 Land use changes and a new use will take over the original function and succeed it.
- 1.2.7 The old, original front or façade of a building is retained and a new development is built behind the old façade.

(7x1) **[7]**

1.3 Refer to the image below.

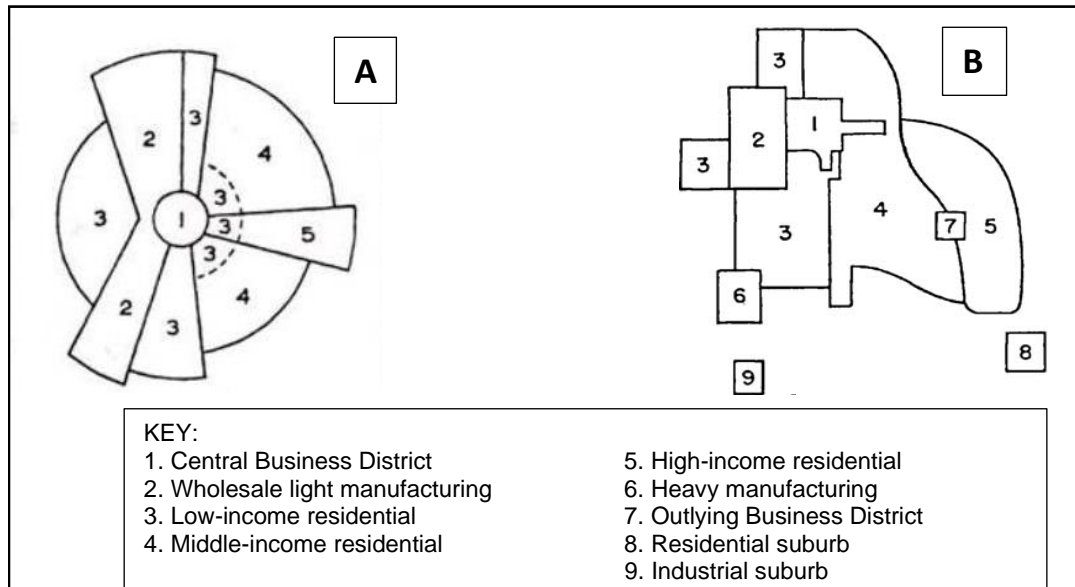


[<https://www.google.com/search?q=URBAN+PROFILES+IN+SOUTH+AFRICA>]

- |       |   |       |     |
|-------|---|-------|-----|
| 1.3.1 | What land-use zone is shown in the image?   | (1x1) | (1) |
| 1.3.2 | Which aspect of city structure is represented in the image?   | (1x2) | (2) |
| 1.3.3 | Why are the buildings so close together?  | (1x2) | (2) |
| 1.3.4 | List TWO main activities that take place in this area of the city.                                  | (2x1) | (2) |
| 1.3.5 | (a) Describe TWO challenges experienced by workers commuting into this area.                        | (2x2) | (4) |
|       | (b) Suggest TWO solutions that will make their trips to and from work, easier. (QUESTION 1.3.5 (a)) | (2x2) | (4) |

**[15]**

1.4 Refer to the two models of urban structure:



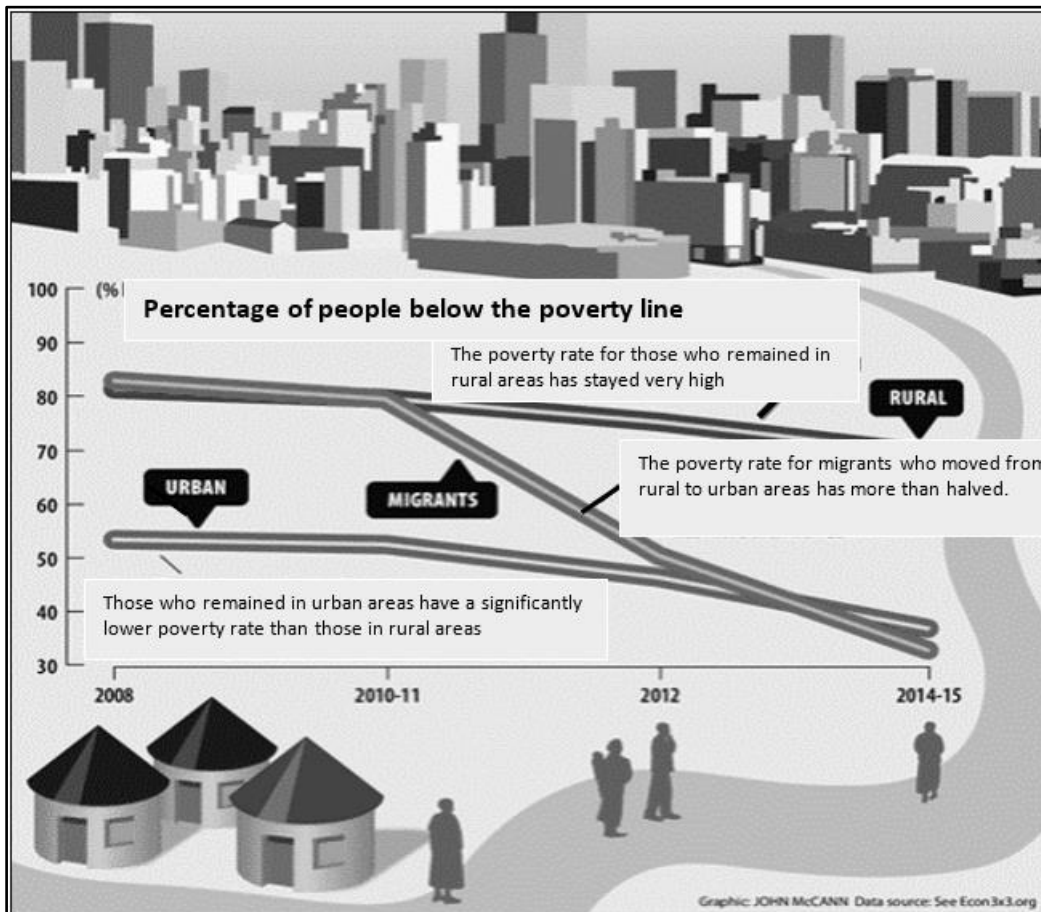
[Adapted from [https://www.google.com/search?q=models+of+city+structure&scas\\_esv=](https://www.google.com/search?q=models+of+city+structure&scas_esv=)]

- 1.4.1 Define the concept *model of city structure*. (1x2) (2)
- 1.4.2 Identify each of the models **A** and **B**. (2x1) (2)
- 1.4.3 (a) Which model (**A** or **B**) is designed around transport routes? (1x1) (1)
- (b) Give a reason for your answer in QUESTION 1.4.3 (a) (1x1) (1)
- 1.4.4 (a) Which model (**A** or **B**) best fits cities today? (1x1) (1)
- (b) Give a reason for your answer in QUESTION 1.4.4 (a) (1x2) (2)
- 1.4.5 Explain how large suburban and regional shopping centres have affected the functions of Central Business Districts. (3x2) (6)

[15]



1.5 Refer to the infographic of rural-urban migration:



[<https://mg.co.za/article/2018-04-26-00-rural-migrants-better-off-in-cities/>]

- 1.5.1 Define the term *rural-urban migration*. (1x2) (2)
- 1.5.2 What percentage of the population remaining in the rural area lived below the poverty line in 2010-2011? (1x1) (1)
- 1.5.3 What percentage of those migrants that remained in urban areas lived below the poverty line in 2014-2015? (1x1) (1)
- 1.5.4 (a) Is the following statement true (yes or no)?  
"Migrants that move to the urban areas are better off." (1x1) (1)
- (b) Quote from the infographic to support your answer to QUESTION 1.5.4 (a). (1x2) (2)
- 1.5.5 In a **paragraph of 8 to 10 lines** describe the conditions in rural areas, that force people to relocate to urban areas. (4x2) (8)

[15]

**TOTAL QUESTION 1: [60]**



## QUESTION 2: ECONOMIC GEOGRAPHY OF SOUTH AFRICA

- 2.1 Choose the correct term from **COLUMN B** to match the explanation in **COLUMN A**. Write only the number and the correct letter in your answer book. E.g. 2.1.9 A

COLUMN A		COLUMN B	
2.1.1	Total value of goods and services produced within the borders of the country in a year	A	Secondary
2.1.2	Activities that involve the processing of raw materials and manufacturing of goods	B	Centralisation
2.1.3	A worker who has a specific set of skills or specialised knowledge	C	Gross Domestic Product
2.1.4	Goods and services that are sold to foreign countries	D	Balance of payments
2.1.5	Movement of industries into "core" areas	E	Informal sector
2.1.6	People who have enough food to meet their needs for a healthy and productive life	F	Imports
2.1.7	A country's financial statement showing its transactions with the rest of the world	G	Skilled worker
2.1.8	Activities by small, unregistered businesses that sell goods or provide services without being licensed	H	Food security
		I	Exports

(8x1) [8]

2.2 Choose one of the industries **A** or **B** that fits the statements below. Write only the letters **A** or **B** next to the question numbers 2.2.1 – 2.2.7.  
Eg. 2.2.8 A.

**A**



**B**



*[<https://www.google.com/search?q=factory+light+industry>]*

- 2.2.1 Uses small amounts of material
- 2.2.2 Located in the industrial areas within the city
- 2.2.3 This type of industry emits a large amount of waste
- 2.2.4 Another example of this type of industry is a bakery
- 2.2.5 Located on the urban periphery
- 2.2.6 This industry only requires a small amount of capital investment
- 2.2.7 Modern shipbuilding is another example of this type of industry

(7x1) [7]



### 2.3 Refer to the extract below:

The South African industry is highly centralised. The four main regions contribute over 70% to the GDP. This means that there is a very unequal distribution of wealth between these core areas and the peripheries. This affects the socio-economics of the country as well. The other effects of the agglomeration are:

- capital is not spreading to outlying areas
- pollution and environmental issues and poor waste control
- congestion
- high property prices and lack of housing
- infrastructure failure
- crime

In order to even out the imbalances the government has over the years tried various processes such as growth point strategies and de-concentration points. There have also been various strategies to increase employment in rural areas, which failed. Tax rebates and lower transport costs had little effect on decentralizing industries. Industrialists need more.

Things such as access to support/linked industries, access to Foreign Direct Investment, easier access to local markets, skilled labour, effective transport links and efficient constant energy and water supply.

Presently the government is engaged in extending the concepts of the Spatial Development Initiatives (SDI), Industrial Development Zones (IDZ) and the Special Economic Zones (SEZ).

[Adapted from Oxford Grade 12]

- |       |   |       |     |
|-------|---|-------|-----|
| 2.3.1 | Define the concept <i>decentralisation</i> .  | (1x2) | (2) |
| 2.3.2 | List TWO reasons why the government needs to decentralise industrial activity.  | (2x1) | (2) |
| 2.3.3 | Did tax rebates and lower transport costs help to decentralise industries in the past?                                  | (1x1) | (1) |
| 2.3.4 | What is the <u>difference</u> between a SDI and an IDZ?   | (1x2) | (2) |
| 2.3.5 | In a <b>paragraph of 8 to 10 lines</b> , explain what industrialists need to effectively decentralise their businesses. | (4x2) | (8) |

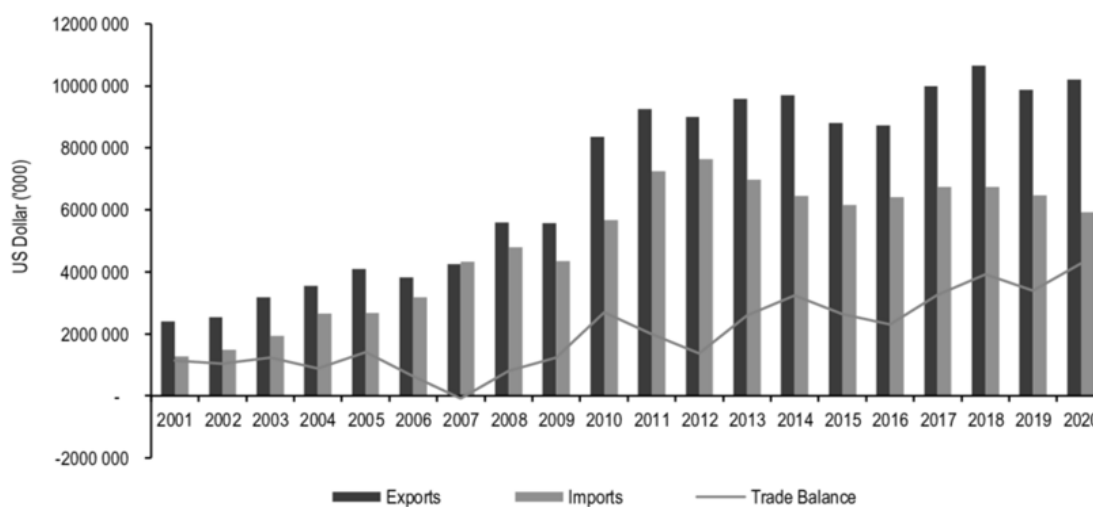
**[15]**



2.4 Refer to the infographic

South Africa is one of the most advanced and diverse economies in Africa. With a population of 62 million people, it is an attractive and growing market. South Africa also serves as an entry point to other countries in Southern Africa. South Africa has a market-oriented agricultural economy that is highly diversified and includes the production of all the major grains (except rice), oilseeds, deciduous and subtropical fruits, sugar, citrus, wine, and most vegetables. Livestock production includes cattle, dairy, pigs, sheep, poultry and eggs. Value-added activities in the sector include slaughtering, processing, and preserving of meat, processing and preserving of fruit and vegetables, dairy products, grain mill products, crushing of oilseeds, prepared animal feeds, sugar refining and cocoa, chocolate, and sugar confectionery amongst other food products. Citrus, wine, table grapes, corn, apples, pears, and wool accounted for the largest exports by value. South Africa also exports wool, nuts, sugar, mohair, and pears.

[<https://www.trade.gov/country-commercial-guides/south-africa-agricultural-sector>]



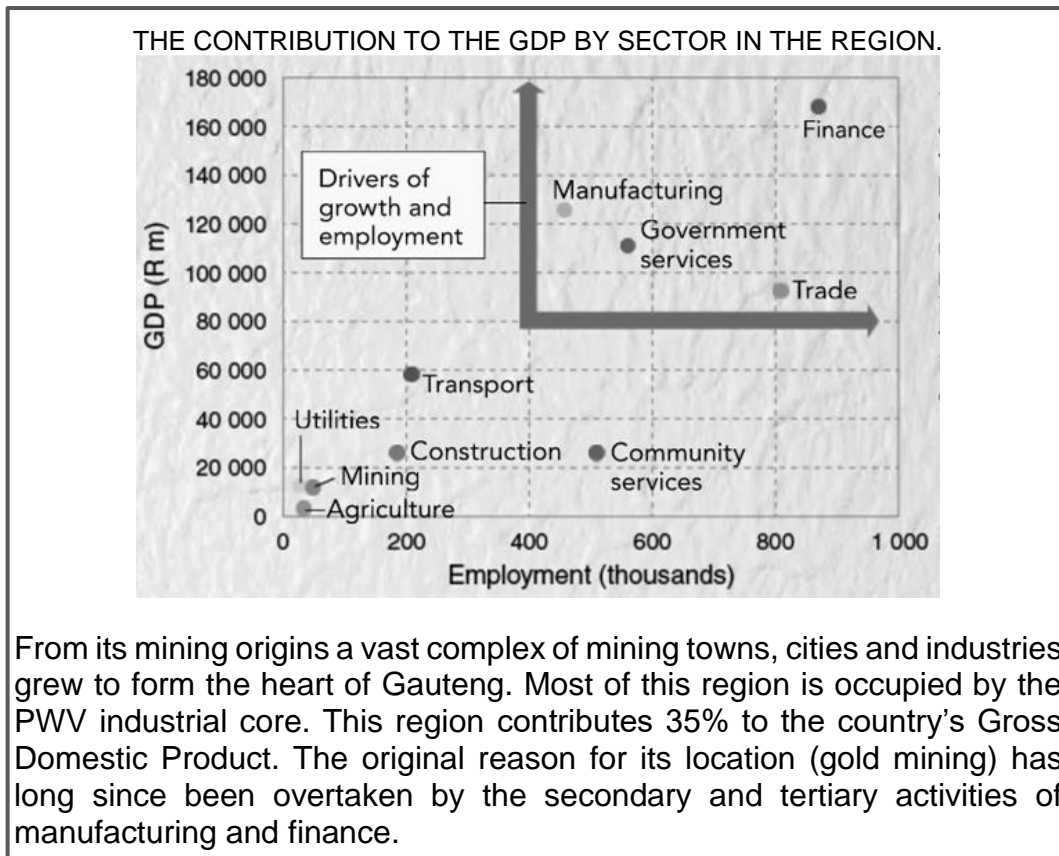
[<https://www.google.com/south+africa/trade>]

- 2.4.1 List TWO *unprocessed* (raw) products that South Africa exports. (2x1) (2)
- 2.4.2 (a) Has South Africa consistently exported more goods in Rand value, than we have imported? (1x1) (1)
- (b) Is the agricultural trade balance positive or negative? (Answer to QUESTION 2.4.2 (a)) (1x1) (1)
- 2.4.3 What is meant by “serves as an entry point to other countries in Southern Africa”? (1x1) (1)
- 2.4.4 Give TWO examples from the text to indicate that value has been added to raw materials. (2x2) (4)
- 2.4.5 Discuss THREE factors that hinder agriculture in South Africa. (3x2) (6)

[15]



- 2.5 Refer to the infographic of the Pretoria-Witwatersrand-Vereeniging industrial complex.



[Adapted from: Oxford South African Thematic Atlas for grades 10 – 12.]

- 2.5.1 Name TWO cities that form part of the PWV complex. (2x1) (2)
- 2.5.2 What was the original reason for the establishment of this region? (1x1) (1)
- 2.5.3 Give the number of employees (thousands) and the monetary contribution in Rands (millions) made by the formal transport sector to the GDP in the PWV complex. (2x1) (2)
- 2.5.4 Which sector of the economy contributes the least to the GDP of the PWV complex? (1x1) (1)
- 2.5.5 (a) Which part of the economy does the trade, finance and government service sectors belong to? (1x1) (1)
- (b) Give a reason for your answer to QUESTION 2.5.5 (a). (1x2) (2)
- 2.6 Discuss THREE factors that influenced the location of the PWV industrial complex. (3x2) (6)

[15]

**TOTAL QUESTION 2: [60]**

## SECTION B

### REFER TO THE ADDENDUM.

#### QUESTION 3: GEOGRAPHICAL SKILLS AND TECHNIQUES

##### 3.1 MAP SKILLS AND CALCULATIONS

- 3.1.1 What *transport related* point symbol is found at 24° 39' South and 30° 21' 22" East ? (1x1) (1)
- 3.1.2 Is the communication tower in block **C2** on the topographical map, visible from the Trigonometrical Beacon (Δ) 29 in block **D1**? (1x1) (1)
- 3.1.3 Which direction would you be looking in, if you were standing at Trigonometrical Beacon (Δ) 29 in block **D1** on the topographical map facing the communication tower in block **C2**? (1x1) (1)
- 3.1.4 Calculate the average gradient between spot height 1202 in block **B6** and the reservoir in block **C5** on the topographical map.
- Formula:  $Gradient = \frac{Vertical\ Interval\ (VI)}{Horizontal\ Equivalent\ (HE)}$  (5x1) (5)
- 3.1.5 (a) Refer to the Orthophoto map.  
Was this photograph taken before or after 12:00? (1x1) (1)
- (b) Give a reason for your answer to QUESTION 3.1.5 (a) (1x1) (1)

**[10]**

##### 3.2 MAP INTERPRETATION

- 3.2.1 List TWO types of agriculture activities evident on the topographical map. (2x1) (2)
- 3.2.2 Identify TWO features that enable successful farming to take place. (2x1) (2)
- 3.2.3 (a) Why is the settlement located at 24° 40' South and 30° 20' 20" East NOT easily accessible? (1x1) (1)
- (b) Classify this settlement on the hierarchy of settlements? (1x1) (1)
- 3.2.4 (a) Describe the street pattern of the suburb of Dresden in block **A5** on the topographical map? (1x1) (1)
- (b) List ONE advantage of this pattern. (1x1) (1)



3.2.5



“TUBATSE CROSSING” is a regional shopping centre that serves Burgersfort and the greater Sekhukhune district.

[Adapted from the Mall website]

The CBD of the town is at the intersection of the R37 and the R555 roads in block **C2** on the topographical map. The shopping centre in the photograph is not in the middle in of the CBD. Give TWO reasons for this.

(2X2) (4)

[12]

3.3 GEOGRAPHICAL INFORMATION SYSTEMS (GIS)

3.3.1 The process used to collate different kinds of information to produce one map is called data ...

- A manipulation.
- B layering.
- C standardisation.
- D integration.

(1x1) (1)

3.3.2 The orthophoto maps are the product of the ... of remote sensing data and vector data from the topographical map

- A Layering
- B Standardisation
- C Integration
- D Buffering

(1x1) (1)

3.3.3 The vector data from a topographical map used on an orthophoto map is ...

- A drainage.
- B slope.
- C height above sea level
- D resolution.

(1x1) (1)

3.3.4 Give ONE attribute data found in block **C2** on the topographical map.

(1x2) (2)



- 3.3.5 Name ONE example of a polygon symbol in block **A3** on the topographical map. (1x1) (1)
- 3.3.6 Name TWO GIS layers planners had to consider before construction of the Tubatse Crossing Mall took place? (2x1) (2)

**[8]**

**TOTAL QUESTION 3: [30]**

**GRAND TOTAL: [150]**



**ROUGHWORK**

**Do NOT remove this page from the question paper. Any work done on this page will not be marked.**