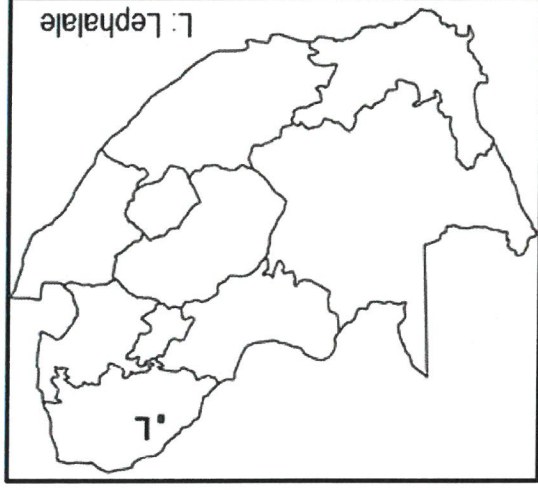


GENERAL INFORMATION; 1:50 000 TOPOGRAPHIC MAP; 1:10 000 ORTHOPHOTO MAP
 ALGEMENE INLIGTING; 1:50 000 TOPOGRAFIESE KAART; 1:10 000 ORTOFOTOKAART

Lephale (formally known as Ellisras) is a coal mining town in the Limpopo Province within the Waterberg District and is the seat of the Lephale Municipality. The municipality area comprises two urban nodes (Lephale / Onverwacht and Marapong) as well as the surrounding rural area (Witpoortjie / Thabo Mbeki) that accommodates both commercial and communal mixed-farming practices. The climate is sub-tropical semi-arid tempered by altitude. The summers are long, hot, and partly cloudy and the winters are short, cool, dry, and clear. Over the course of the year, the temperature typically varies from 7 °C to 32 °C and is rarely below 4 °C or above 36 °C. Mainly summer rainfall of 440 mm annually.

The economy of Lephale is dominated by coal mining, electricity production, tourism, agriculture and game farming.



Orientation map / Oriënteringskaart

The Waterberg coalfield has an estimated reserve of 75-billion tons of coal that equals 40% of South Africa's remaining coal resource. Only a relatively small part of the Waterberg coalfield is shallow enough to be accessed by open pit mining. The Grootegeluk coal mine is the largest open cast coal mine in the world and provides high grade coal for iron and steel production, while the low grade coal is supplied to Eskom's local **Matimba Power Station** (the largest direct dry-cooled power station in the world). Eskom is commissioning a new power station called **Medupi**.

ooOoo

Lephale (voorheen bekend as Ellisras) is 'n steenkool myndorp in die Limpopoprovinsie binne die Waterberg-distrik en is die setel van die Lephale Munisipaliteit. Die munisipaliteitsgebied bestaan uit twee stedelike nodes (Lephale / Onverwacht en Marapong) sowel as een landelike gebied (Witpoortjie / Thabo Mbeki) wat beide kommersiële en gemengde boerderypraktieke besaan.

Die klimaat is sub-tropies semi-ariëde getemper deur hoogte bo seevlak. Die somers is lank en warm, en die winters is kort, koel en droë. Met die verloop van 'n jaar wissel die temperatuur tipies van 7 °C tot 32 °C en is selde benede 4 °C of bo 36 °C. Hoofsaaklik somerreënval van 440 mm per jaar. Die ekonomie van Lephale word gedomineer deur steenkool mynbou, elektrisiteitsopwekking, toerisme, landbou en wildboerdery.

Die Waterberg steenkoolveld het 'n geraamde 75-biljoen ton in reserwe wat 40% van Suid-Afrika se steenkoolreserwe verteenwoordig. Slegs 'n relatief klein gedeelte van hierdie steenkool is vlak genoeg om met oopmynbou bereik te word. Die Grootegeluk steenkoolmyn is die grootste oopgraafmyn in die wêreld en voorsien hoë-graad steenkool vir yster- en staalproduksie, terwyl lae-graad steenkool aan Eskom se plaaslike **Matimbakragstasie** (die grootste droë-verkoelde kragstasie in die wêreld) gelewer word. Eskom is besig om 'n nuwe kragstasie, naamlik **Medupi**, in werking te stel.

<https://en.wikipedia.org/wiki/Lephale>
<https://climatestravel.com/south africa/lephale>

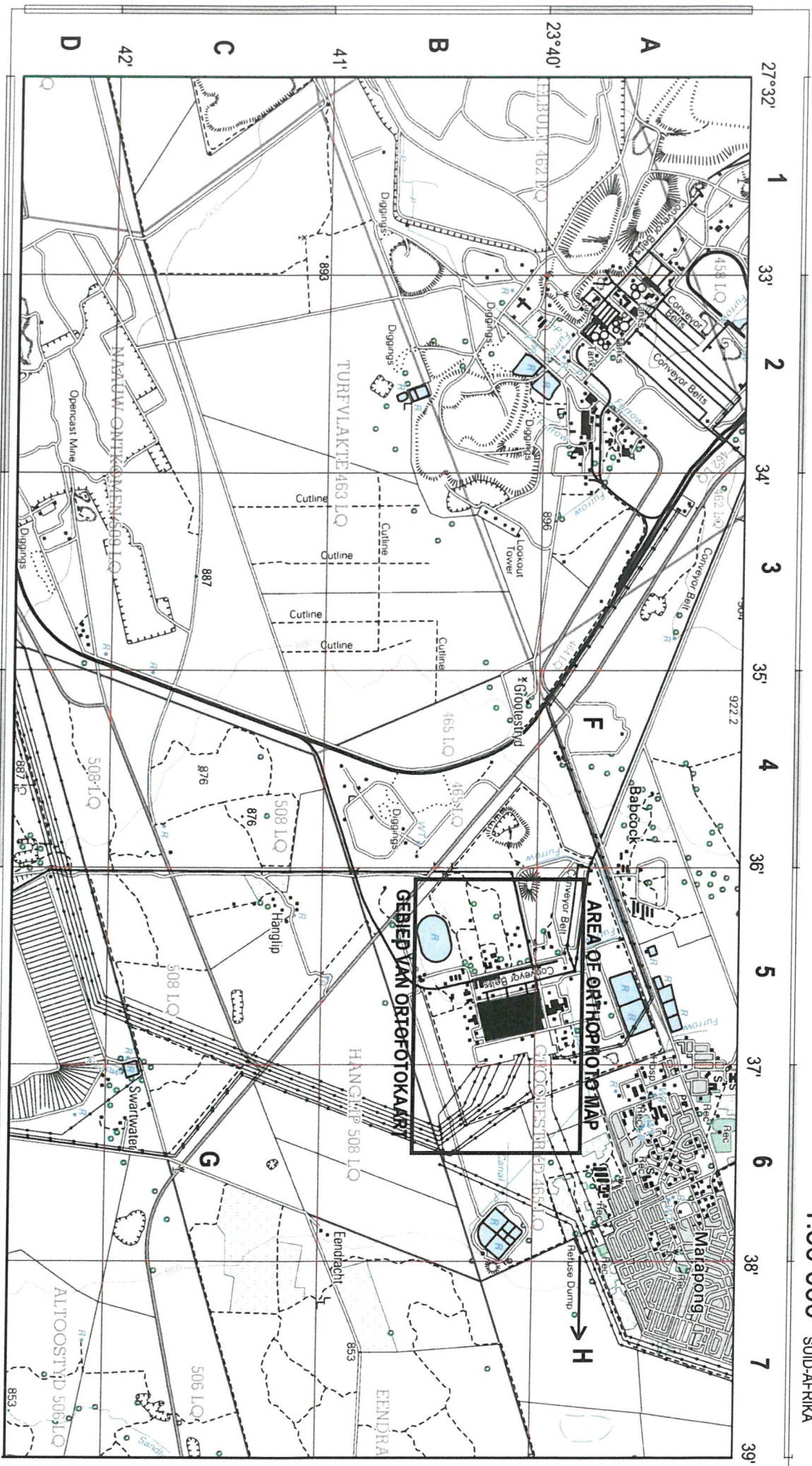
Some of the English terms and their Afrikaans translations / Sommige van die Engelse terme en hul Afrikaanse vertalings

ENGLISH	AFRIKAANS
Diggings	Delwerye
Furrow	Voor
Recreation (Rec.)	Ontspanning (Rec.)

..... Topographic map / Topografiese kaart

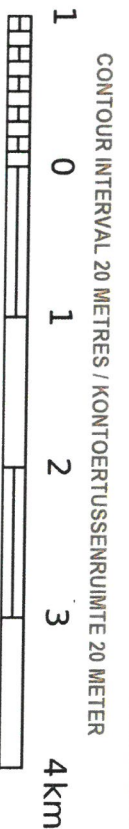
MAP SYMBOLS / KAARTSIMBOLE

Nasionale Deurpad; Nasionale Roete		Arterial Route		Main Road		Secondary Road; Bench Mark		Other Road; Bridge		Track and Hiking Trail		Railway; Station or Siding		Railway; Station or Siding		Other Railway; Tunnel		Embankment; Cutting		Power Line		Build-up Area (High, Low Density)		Buildings; Ruin		Post Office; Police Station; Store		Place of Worship; School; Hotel		Fence; Wall		Windpump; Monument		Communication Tower		Wind Turbine; Wind Farm		Satellite Antenna; Solar Panel Array		Trigonometrical Station; Marine Beacon		Lighthouse and Marine Light		Cemetery; Grave		Internasionale Grens en Baken		Provinciale Grens		Protected Area		Perennial River		Perennial Water		Non-perennial River		Non-perennial Water		Dry Water Course		Dry Pan		Marsh and Vlei		Pipeline (above ground)		Water Tower; Reservoir; Water Point		Coastal Rocks		Prominent Rock Outcrop		Erosion; Sand		Woodland		Cultivated Land		Orchard or Vineyard		Recreation Ground		Row of Trees		Mine Dump; Excavation	
Nasionale Deurpad; Nasionale Roete	Hoofpad	Sekondêre Pad; Hoogtemerk	Andere Pad; Brug	Dowwe Pad en Voetslaanpad	Railway; Station or Siding	Spoorweg; Stasie of Slyn	Andere Spoorweg; Tunnel	Embankment; Cutting	Power Line	Build-up Area (High, Low Density)	Buildings; Ruin	Post Office; Police Station; Store	Place of Worship; School; Hotel	Fence; Wall	Windpump; Monument	Communication Tower	Wind Turbine; Wind Farm	Satellite Antenna; Solar Panel Array	Trigonometrical Station; Marine Beacon	Lighthouse and Marine Light	Cemetery; Grave	Internasionale Grens en Baken	Provinciale Grens	Protected Area	Perennial River	Perennial Water	Non-perennial River	Non-perennial Water	Dry Water Course	Dry Pan	Marsh and Vlei	Pipeline (above ground)	Water Tower; Reservoir; Water Point	Coastal Rocks	Prominent Rock Outcrop	Erosion; Sand	Woodland	Cultivated Land	Orchard or Vineyard	Recreation Ground	Row of Trees	Mine Dump; Excavation																																													
Nasionale Deurpad; Nasionale Roete	Hoofpad	Sekondêre Pad; Hoogtemerk	Andere Pad; Brug	Dowwe Pad en Voetslaanpad	Railway; Station or Siding	Spoorweg; Stasie of Slyn	Andere Spoorweg; Tunnel	Embankment; Cutting	Power Line	Build-up Area (High, Low Density)	Buildings; Ruin	Post Office; Police Station; Store	Place of Worship; School; Hotel	Fence; Wall	Windpump; Monument	Communication Tower	Wind Turbine; Wind Farm	Satellite Antenna; Solar Panel Array	Trigonometrical Station; Marine Beacon	Lighthouse and Marine Light	Cemetery; Grave	Internasionale Grens en Baken	Provinciale Grens	Protected Area	Perennial River	Perennial Water	Non-perennial River	Non-perennial Water	Dry Water Course	Dry Pan	Marsh and Vlei	Pipeline (above ground)	Water Tower; Reservoir; Water Point	Coastal Rocks	Prominent Rock Outcrop	Erosion; Sand	Woodland	Cultivated Land	Orchard or Vineyard	Recreation Ground	Row of Trees	Mine Dump; Excavation																																													



Mean magnetic declination 15°40' West of True North
(2019). Mean annual change 06' Westward (2017-2018)

Gemiddelde magnetiese deklinasie 25°56' Wes van
Ware Noord (2019). Gemiddelde jaarlikse verandering
06' Weswaarts (2017-2018)



Topographic map courtesy: CD:NGI
Topographic map layer hosted by OSM
This layout CC BY-SA 2.5 ZA
by SAGTA and Kartoza

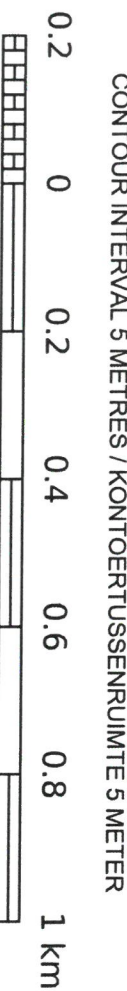
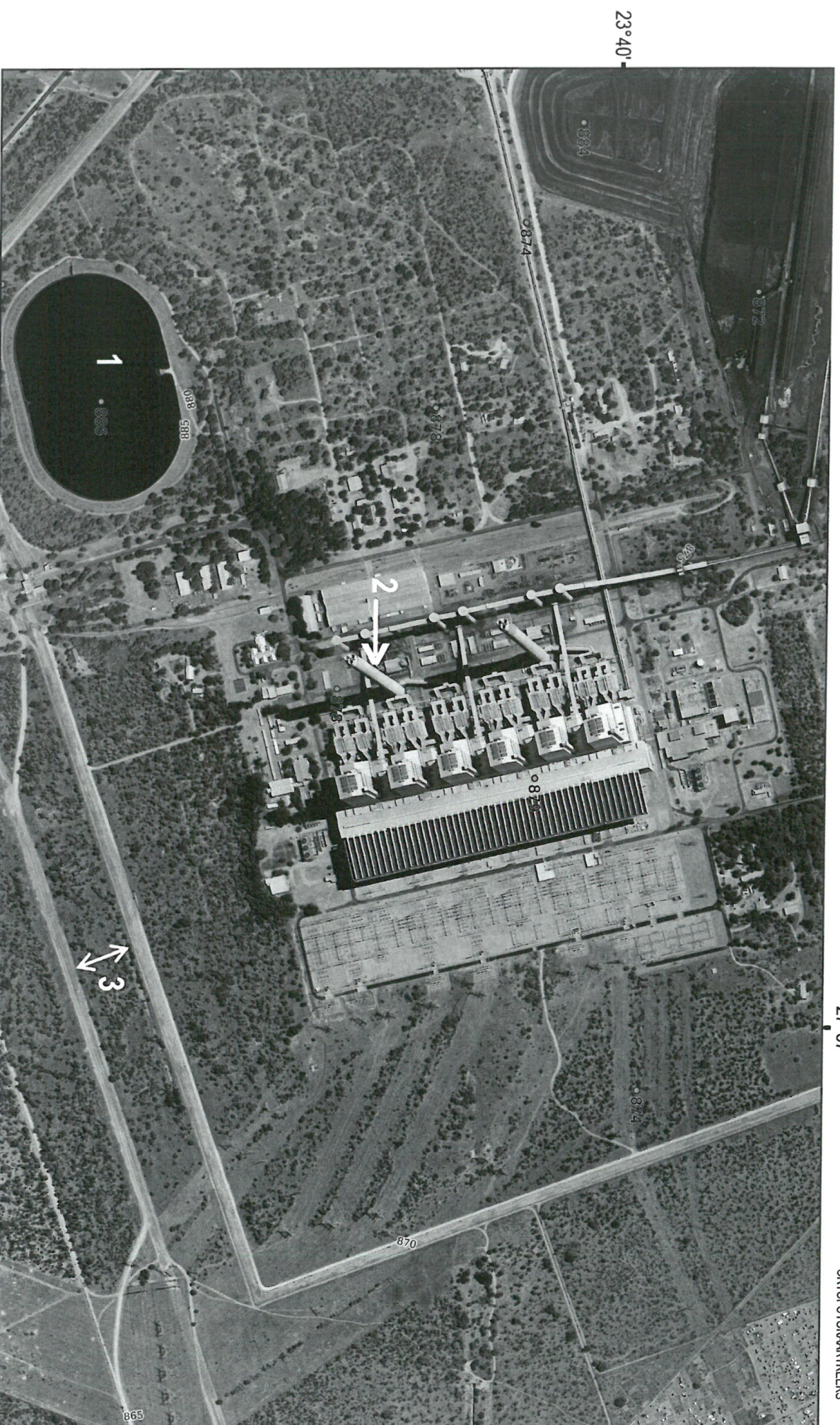


1:10 000 SUID-AFRIKA
SOUTH AFRICA

2327 DA 18 LEPPHALALE

27°37'

ORTHOPHOTO MAP SERIES
ORTOFOTOKAARTREKKE



Orthophotos and topographic data
courtesy: CD:NGI
Orthophoto map layer hosted by OSM
This layout CC BY-SA 2.5 ZA
by SAGTA and Kartoza