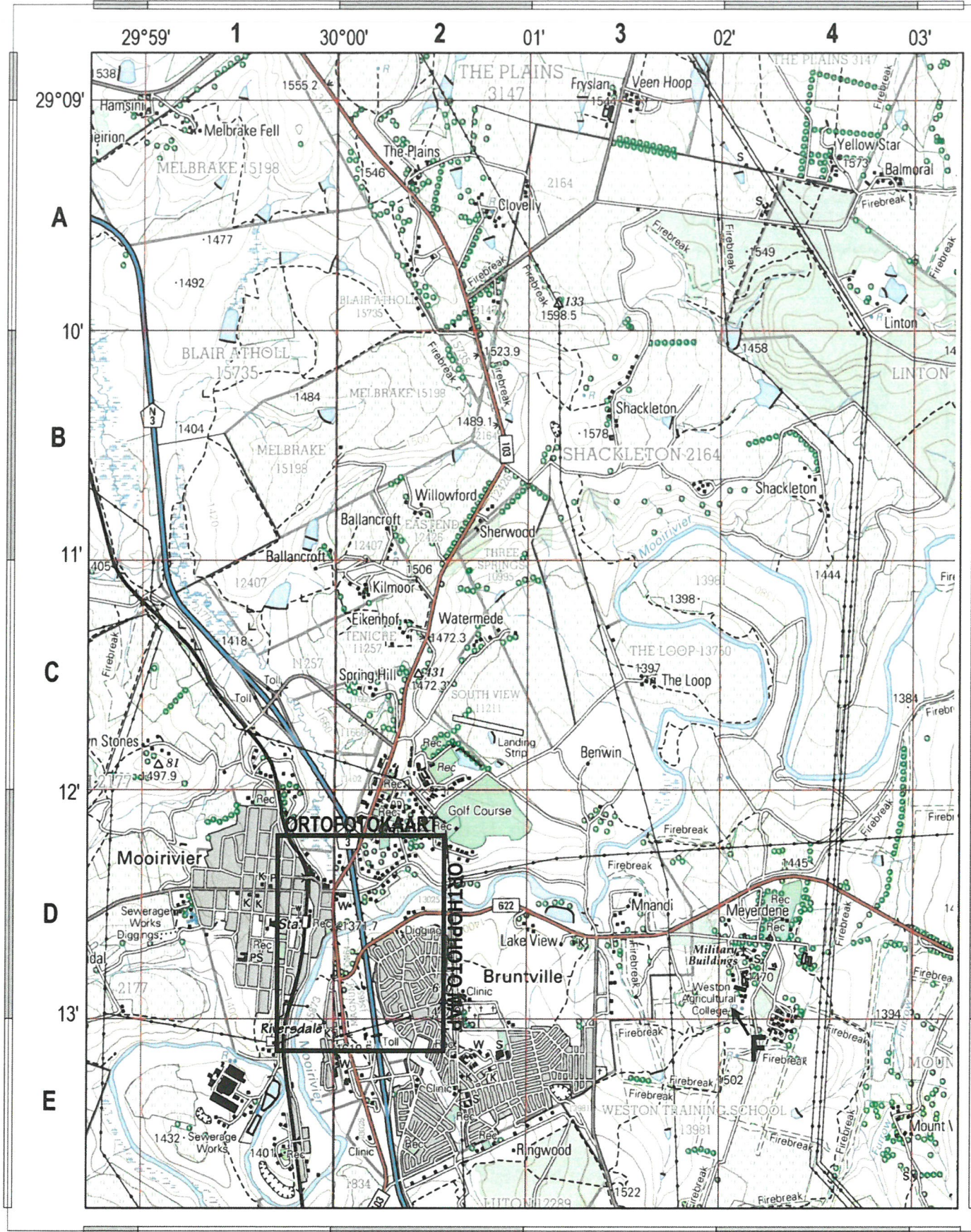
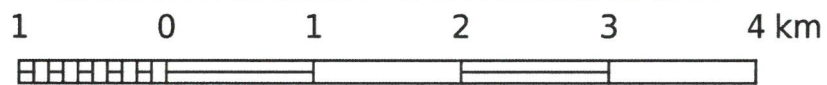


2929BB & 2930AA MOOIRIVIER

1:50 000 SOUTH AFRICA
SUID-AFRIKA



CONTOUR INTERVAL 20 METRES / KONTOERTUSSENRUIMTE 20 METER



Mean magnetic declination 25° 20' West of True North (2023). Mean annual change 9' Westward (2019-2022).
Gemiddelde magnetiese deklinasie 25° 20' Wes van Ware Noord (2023). Gemiddelde jaarlikse verandering 9' Weswaarts (2019-2022).

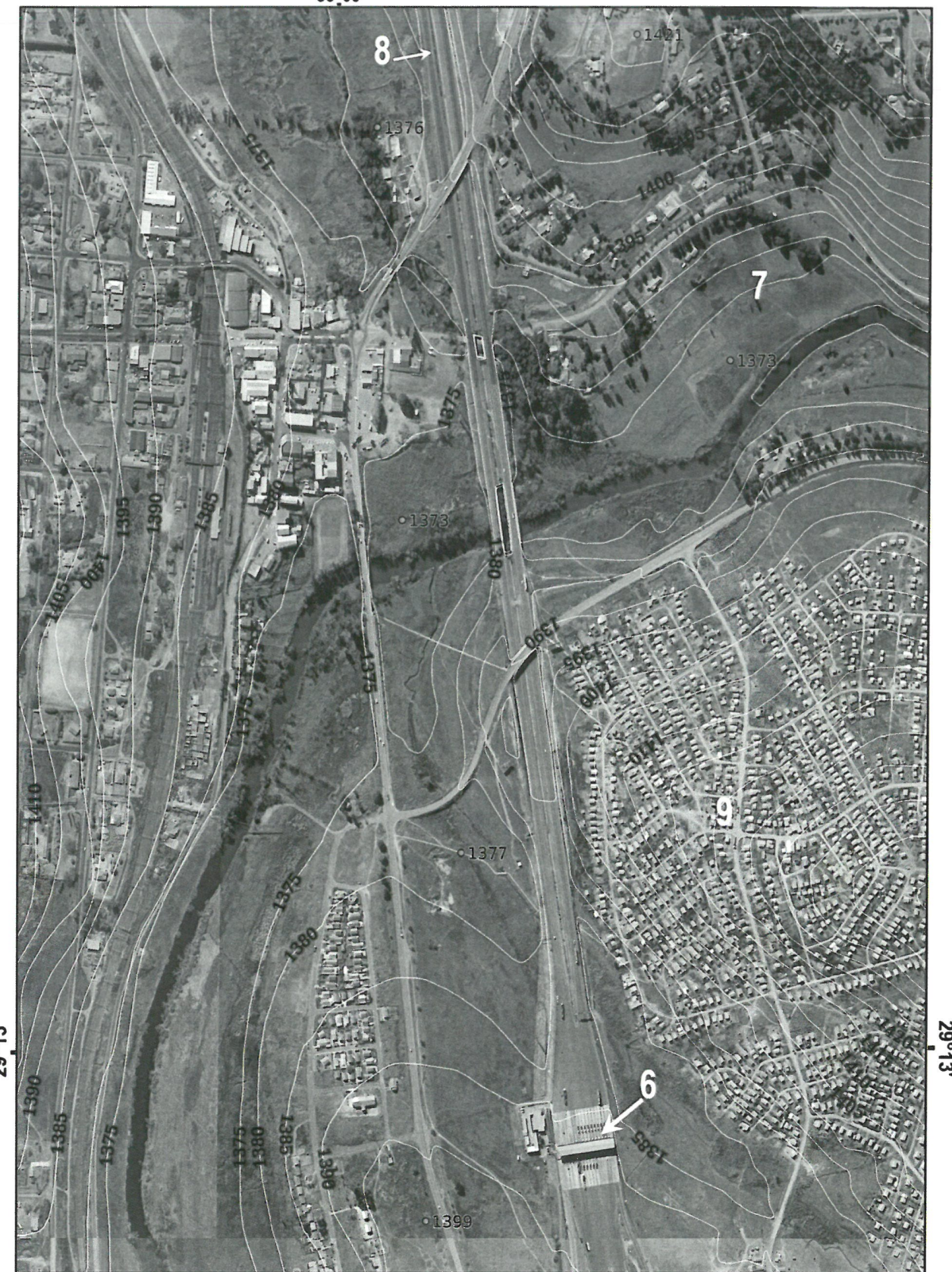


Topographic map courtesy CD:NGI
Topographic map layer hosted by OSM
This layout CC BY-SA 2.5 ZA
by SAGTA and Kartoza

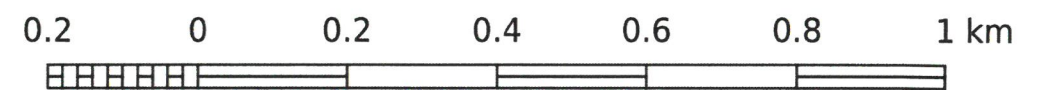
1:10 000 SOUTH AFRICA
SUID-AFRIKA

2929 BB & 2930 AA 16 MOOIRIVIER
30°00'

ORTOFOTOKAARTREKKE
ORTHOPHO MAP SERIES



CONTOUR INTERVAL 5 METRES / KONTOERTUSSENRUIMTE 5 METER



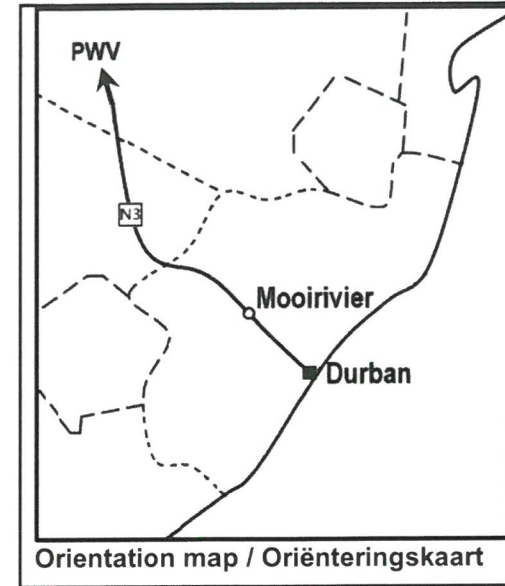
Orthophotos and topographic data courtesy CD:NGI
Orthophoto map layer hosted by OSM
This layout CC BY-SA 2.5 ZA
by SAGTA and Kartoza

MAP SYMBOLS / KAARTSIMBOLE

National Freeway; National Route.....		Nasionale Deurpad; Nasionale Roete
Arterial Route.....		Hoofverkeersroete
Main Road.....		Hoofpad
Secondary Road; Bench Mark.....		Sekondêre Pad; Hoogtemerk
Other Road; Bridge.....		Ander Pad; Brug
Track and Hiking Trail.....		Dowwe Pad en Voetslaanpad
Railway; Station or Siding.....		Spoorweg; Stasie of Sylyn
Other Railway; Tunnel.....		Ander Spoorweg; Tonnel
Embankment; Cutting.....		Opvulling; Deurgrawing
Power Line.....		Kraglynn
Built-up Area (High, Low Density).....		Beboude Gebied (Hoë, Lae Digtheid)
Buildings; Ruin.....		Geboue; Murasie
Post Office; Police Station; Store.....		Poskantoor; Polisiestasie; Winkel
Place of Worship; School; Hotel.....		Plek van Aanbidding; Skool; Hotel
Fence; Wall.....		Draadheining; Muur
Windpump; Monument.....		Windpomp; Monument
Communication Tower.....		Kommunikasietoring
Wind Turbine; Wind Farm.....		Windturbine; Windplaas
Satellite Antenna; Solar Panel Array.....		Satelliet Antenna; Sonkrag Plaas
Trigonometrical Station; Marine Beacon.....		Peilbaken; Seevaartbaken
Lighthouse and Marine Light.....		Vuurtoring en Seevaartlig
Cemetery; Grave.....		Begraafplaas; Graf
International Boundary and Beacon.....		Internasionale Grens en Baken
Provincial Boundary.....		Provinsiale Grens
Protected Area.....		Bewarings Gebied
Perennial River.....		Standhoudende Rivier
Perennial Water.....		Standhoudende Water
Non-perennial River.....		Nie-standhoudende Rivier
Non-Perennial Water.....		Nie-standhoudende Water
Dry Water Course.....		Droë Loop
Dry Pan.....		Droë Pan
Marsh and Vlei.....		Moeras en Vlei
Pipeline (above ground).....		Pyplyn (bo die grond)
Water Tower; Reservoir; Water Point.....		Watertoring; Reservoir; Waterpunt
Coastal Rocks.....		Kuslynrotse
Prominent Rock Outcrop.....		Prominente Klipbank
Erosion; Sand.....		Erosie; Sand
Woodland.....		Beboste Gebied
Cultivated Land.....		Bewerkte Land
Orchard or Vineyard.....		Boord of Wingerd
Recreation Ground.....		Ontspanningsterrein
Row of Trees.....		Rye Bome
Mine Dump; Excavation.....		Mynhoop; Uitgraving

GEOGRAPHY / GEOGRAFIE SENIOR CERTIFICATE EXAMINATION / SENIOR-SERTIFIKAATEKSAMEN PAPER 2 / VRAESTEL 2 NOVEMBER 2025

GENERAL INFORMATION; 1:50 000 TOPOGRAPHIC MAP; 1:10 000 ORTHOPHOTO MAP /
ALGEMENE INLIGTING; 1:50 000 TOPOGRAFIESE KAART; 1:10 000 ORTOFOTOKAART



Moorivier is a small town situated at 1 389 m above sea level in the KwaZulu-Natal Midlands about 160 km from the coast and forms part of the Mpofana Municipality. It lies on the N3 national road and the railway-line between Johannesburg and Durban. Although the railway station is no longer used for passengers, goods are still being handled there.

The urban economy of the area is currently based primarily on retail entrepreneurship, tourism and supporting the local agricultural community. The rural economy is based on agriculture and tourism. The main farming categories are dairy and race horse breeding. It is a well-drained landscape, most of it ideally suited to agriculture.

In Mooirivier the summers are long, warm, wet, and partly cloudy and the winters are short, cold, dry, and mostly clear. The hottest month of the year is January with an average of 18,9°C. The coldest month is June, with an average of 9,2°C. An annual precipitation of 914mm occurs mainly from November to February.

o o o o o o o

Moorivier is 'n klein dorpie geleë op 1 389 m bo seespieël in die KwaZulu-Natalse Middellande sowat 160 km van die kus af en vorm deel van die Mpofana Munisipaliteit. Dit lê op die N3 nasionale pad en die spoorlyn tussen Johannesburg en Durban. Hoewel die spoorwegstasie nie meer vir passasiers gebruik word nie, word goedere steeds daar hanteer.

Die stedelike ekonomie van die gebied is tans hoofsaaklik gebaseer op kleinhandel entrepreneurskap, toerisme en ondersteuning van die plaaslike landbougemeenskap. Die landelike ekonomie is gebaseer op landbou en toerisme. Die hoof boerderykategorieë is suiwel en renperdteëling. Dit is 'n goed-deurdrenkte landskap, die meeste daarvan is ideaal vir landbou.

In Mooirivier is die somers lank, warm, nat en gedeeltelik bewolk en die winters is kort, koud, droog en meestal mooiweer. Die warmste maand van die jaar is Januarie met 'n gemiddeld van 18,9°C. Die koudste maand is Junie, met 'n gemiddeld van 9,2°C. 'n Jaarlikse neerslag van 914 mm kom hoofsaaklik van November tot Februarie voor.

<https://af.wikipedia.org> / <https://weatherandclimate.com>

Some of the English terms and their Afrikaans translations / Sommige van die Engelse terme en hul Afrikaanse vertaling:

ENGLISH	AFRIKAANS	ENGLISH	AFRIKAANS
Agricultural College	Landboukollege	Golf Course	Gholfbaan
Clinic	Kliniek	Landing Strip	Landingstrook
Diggings	Delwerye	Recreation (Rec.)	Ontspanning (Rec)
Firebreak	Brandstrook	Sewerage Works	Rioolwerke

..... Topographic map / Topografiese kaart