

MAP SYMBOLS / KAARTSIMBOLE

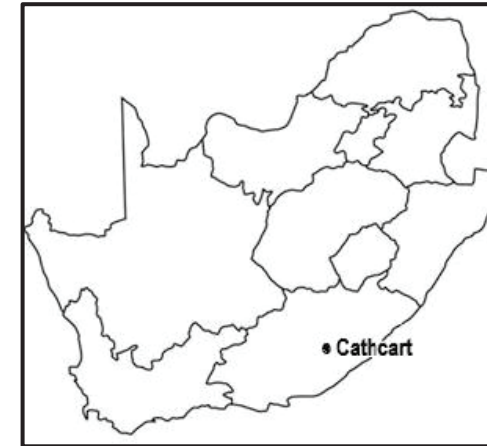
National Freeway; National Route.....	Nasionale Deurpad; Nasionale Roete
Arterial RouteHoofverkeersroete
Main RoadHoofpad
Secondary Road; Bench Mark.....	Sekondêre Pad; Hoogtemerk
Other Road; BridgeAnder Pad; Brug
Track and Hiking Trail.....	Dowwe Pad en Voetslaanpad
Railway; Station or Siding.....	Spoorweg; Stasie of Sylyn
Other Railway; Tunnel.....	Ander Spoorweg; Tonnel
Embankment; Cutting.....	Opvulling; Deurgrawing
Power Line.....	Kraglyyn
Built-up Area (High, Low Density).....	Beboude Gebied (Hoë, Lae Digtheid)
Buildings; RuinGeboue; Murasie
Post Office; Police Station; Store.....	Poskantoor; Polisiestasie; Winkel
Place of Worship; School; HotelPlek van Aanbidding; Skool; Hotel
Fence; WallDraadheining; Muur
Windpump; Monument.....	Windpomp; Monument
Communication Tower.....	Kommunikasietoring
Wind Turbine; Wind FarmWindturbine; Windplaas
Satellite Antenna; Solar Panel ArraySatelliet Antenna; Sonkrag Plaas
Trigonometrical Station; Marine Beacon.....	Peilbaken; Seevaartbaken
Lighthouse and Marine Light.....	Vuurtooring en Seevaartlig
Cemetery; GraveBegraafplaas; Graf
International Boundary and Beacon.....	Internasionale Grens en Baken
Provincial Boundary.....	Provinsiale Grens
Protected Area.....	Bewarings Gebied
Perennial RiverStandhoudende Rivier
Perennial Water.....	Standhoudende Water
Non-perennial River.....	Nie-standhoudende Rivier
Non-Perennial Water.....	Nie-standhoudende Water
Dry Water CourseDroë Loop
Dry PanDroë Pan
Marsh and VleiMoeras en Vlei
Pipeline (above ground).....	Pyplyn (bo die grond)
Water Tower; Reservoir; Water Point.....	Watertoring; Reservoir; Waterpunt
Coastal RocksKuslynrotse
Prominent Rock Outcrop.....	Prominente Klipbank
Erosion; SandErosie; Sand
WoodlandBeboste Gebied
Cultivated Land.....	Bewerkte Land
Orchard or VineyardBoord of Wingerd
Recreation Ground.....	Ontspanningsterrein
Row of Trees.....	Rye Bome
Mine Dump; ExcavationMynhoop; Uitgraving

GEOGRAPHY / GEOGRAFIE

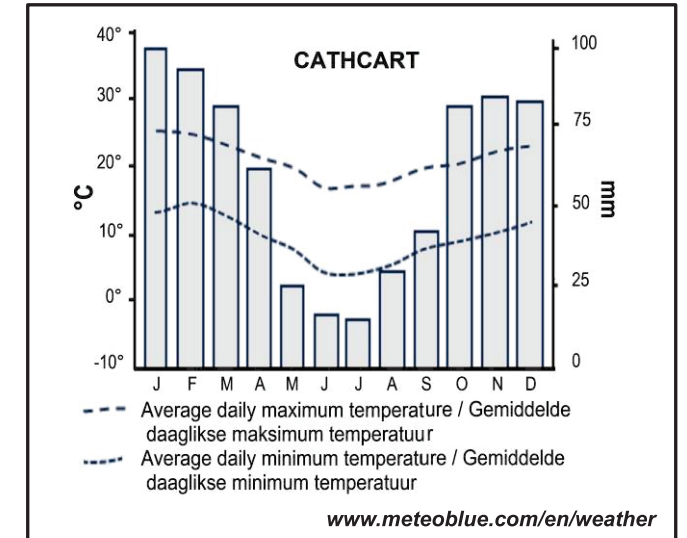
NATIONAL SENIOR CERTIFICATE / NASIONALE SENIORSERTIFIKAAT

PAPER 1 / VRAESTEL 1: NOVEMBER 2024

GENERAL INFORMATION; 1:50 000 TOPOGRAPHIC MAP; 1:10 000 ORTHOPHOTO MAP /
ALGEMENE INLIGTING; 1:50 000 TOPOGRAFIESE KAART; 1:10 000 ORTOFOTOKAART



Orientation map / Oriënteringskaart



Orientation graph / Oriënteringsgrafiek

Cathcart is a small town in the Eastern Cape province. It is situated on the N6 which ensures access to Queenstown to the north and East London to the south-east.

The town sits in the foothills of the Amathole mountain range, offering tourists a mild climate, although some peaks are covered with snow in winter.

Activities include fishing, mountain biking, gliding and hiking along a number of trails which begin at the old post office. The scenery in the area is beautiful.

The region has good pasture for animal grazing and rich soils for crop farming. These factors and the climate enable a variety of crops to be grown, such as pineapples, chicory, tomatoes and tea. Sheep farming is also an important contributor to the economy of the area.

ooOoo

Cathcart is 'n klein dorpie in die Oos-Kaapprovinsie. Geleë op die N6 verseker dit toegang na Queenstown na die noorde en Oos-Londen na die suidooste.

Die dorp is genestel in die voetheuwels van die Amatholebergreeks en bied toeriste 'n gematigde klimaat, alhoewel sommige pieke gedurende die winter met sneeu bedek is.

Aktiwiteite sluit in visvang, bergfiets en -hangsweef en 'n aantal staproetes wat by die historiese poskantoor begin. Die landskap in die gebied is mooi.

Die streek het goeie weiding vir veevoer en vrugbare grond vir gewasverbouing. Hierdie faktore en die klimaat maak dit moontlik vir 'n verskeidenheid gewasse soos pynappels, sigorei, tamaties en tee. Skaapboerdery is ook 'n belangrike bydraer tot die ekonomie van die gebied.

<https://en.wikipedia.org/cathcart>
www.sa-venues.com/attractions/cathcart

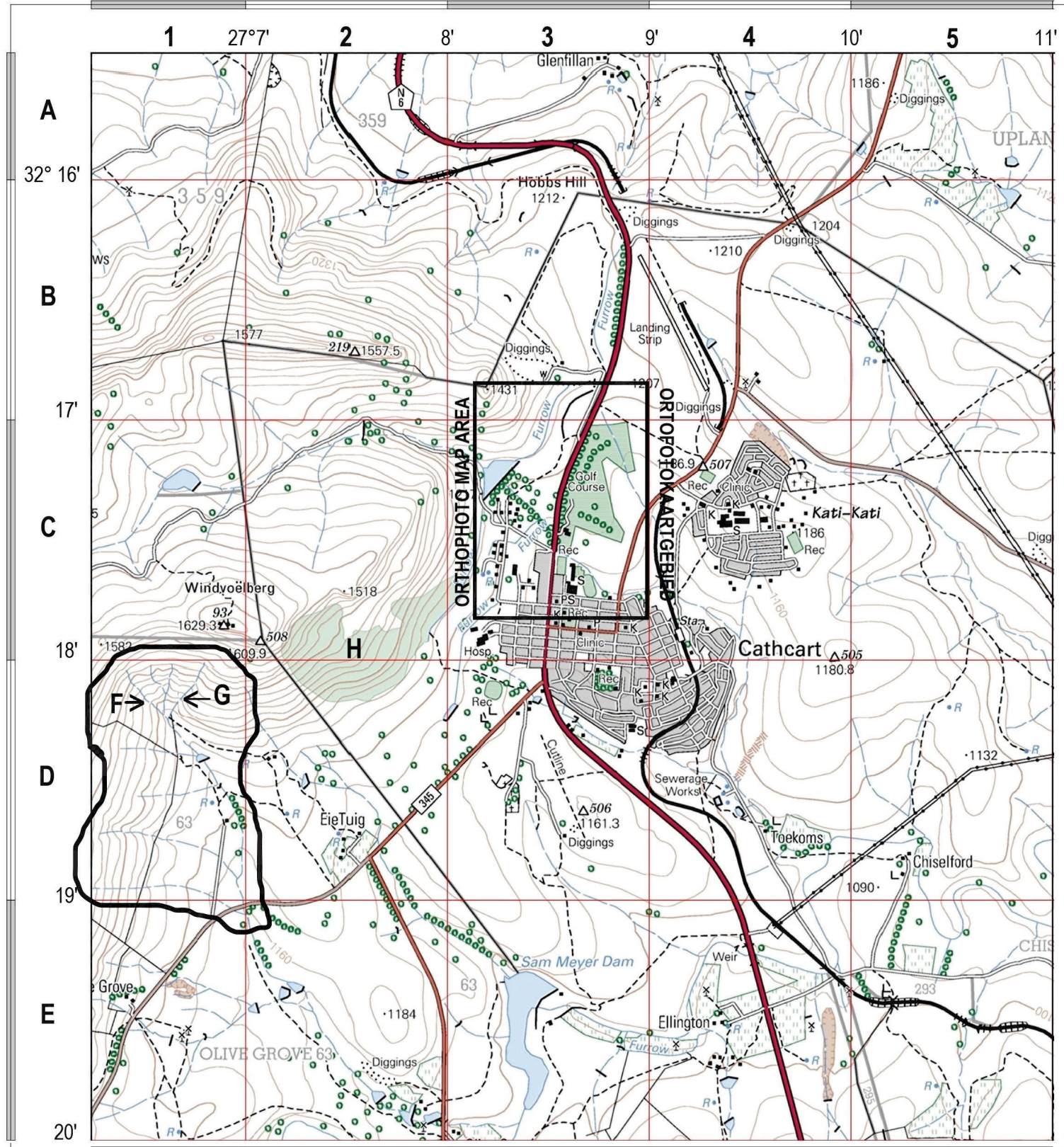
Some of the English terms and their Afrikaans translations / Sommige van die Engelse terme en hul Afrikaanse vertalings

ENGLISH	AFRIKAANS	ENGLISH	AFRIKAANS
Cutline (surveying line)	Snylyn (prospekteerlyn)	Landing strip	Landingstrook
Diggings	Delwerye	Recreation (Rec.)	Ontspanning (Rec.)
Golf Course	Gholfbaan	Sewerage Works	Rioolwerke

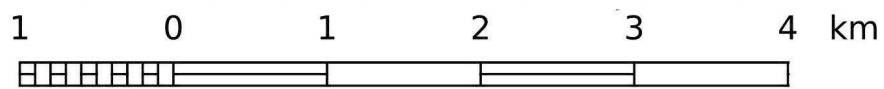
.....Topographic map / Topografiese kaart

3227AC CATHCART

1:50 000 SOUTH AFRICA
SUID-AFRIKA



CONTOUR INTERVAL 20 METRES / KONTOERTUSSENRUIMTE 20 METER



QGIS



Topographic map courtesy CD:NGI
Topographic map layer hosted by OSM
This layout CC BY-SA 2.5 ZA
by SAGTA and Kartoza

Mean magnetic declination 28°14' West of True North (2021). Mean annual change 9' Westward (2018-2020)

Gemiddelde magnetiese deklinasie 28°14' Wes van Ware Noord (2021). Gemiddelde jaarlikse verandering 9' Weswaarts (2018-2020)

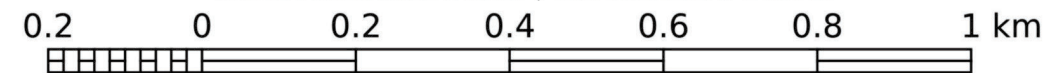
1:10 000 SUID-AFRIKA
SOUTH AFRICA

3227 AC 3 CATHCART

ORTOFOTOKAARTREKKE
ORTHOPHOTO MAP SERIES 27°9'



KONTOERTUSSENRUIMTE 10 METER / CONTOUR INTERVAL 10 METRES



QGIS

Orthophotos and topographic data courtesy CD:NGI
Orthophoto map layer hosted by OSM
This layout CC BY-SA 2.5 ZA
by SAGTA and Kartoza